









# SOPHISTICATED SURFSIDE LIVING

---

In the highly sought after Town of Surfside, steps from the beach and a lush, tropical 35-acre ocean front park, 88 Hundred Collins is truly meant for living.

With the amenities of a larger building but in a boutique and intimate setting, 88 Hundred Collins offers the alternative to large skyscraper living. This perfectly located, boutique 28 residence building with a modern and simple design will feel like a home. **Offering the first home style loft units in Surfside, this building is actually meant to be lived in.**

88 Hundred Collins provides the unique opportunity for future residents to live amongst the newest high profile condominiums in South Florida.









# LOCATION

Surfside is one of the most sought after destinations in South Florida. Bordering Bal Harbour and Miami Beach, Surfside is close to all of the action while maintaining its character as an upscale beach town with great shops, restaurants and cafes.

Just five minutes from Bal Harbour Shops, residents will be able to enjoy the exclusive luxury open air shopping mall with beautiful landscaping and a diverse range of restaurants. Reside in a tropical beachside town with South Beach's night clubs, restaurants, and ritzy hotels only ten minutes away.

88 Hundred Collins is the ideal primary residence for families that desire a great public school district as well as accessibility to the area's religious institutions.

Driving is optional, with everything one would need in walking distance, including:

- The pristine Surfside Beach
- The North Shore Park, a gorgeous 36 acre, oceanfront oasis
- The Surfside Tennis Center (located across the street from the building)
- Downtown Surfside
- The Shul of Bal Harbour and St. Joseph's Catholic Church
- Shuttle stops in front of building providing free transportation to Miami Beach and Bal Harbour







# LIFESTYLE AT SURFSIDE

Surfside is the perfect community for your permanent residence, seasonal retreat, family vacation, or relaxing escape. Gorgeous, pleasant, safe, convenient, with all the amenities that you would expect in a tropical paradise.

The Town is home to approximately 6,000 residents that **enjoy one of the best beaches in South Florida, numerous parks and a traditional "home town" business district with an ample array of restaurants, cafes, ice cream parlors, supermarkets and community services...all within walking distance.**







## UNITS & FEATURES

- 28 contemporary residences with modern open layouts and flexible configuration options
- Environmentally sustainable design features
- Private terraces with optional private elevator and Jacuzzi
- Contemporary, Italian-designed kitchens and bathrooms
- State of the art security system
- Two assigned parking spaces (Home units)

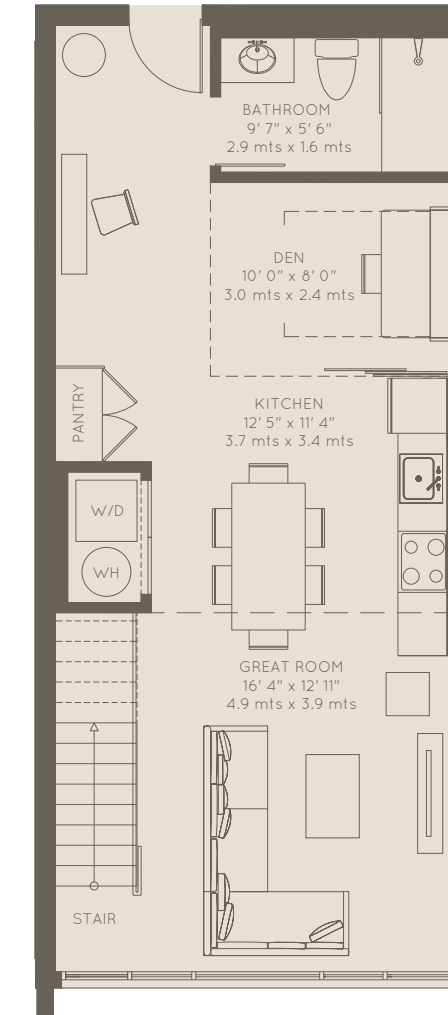




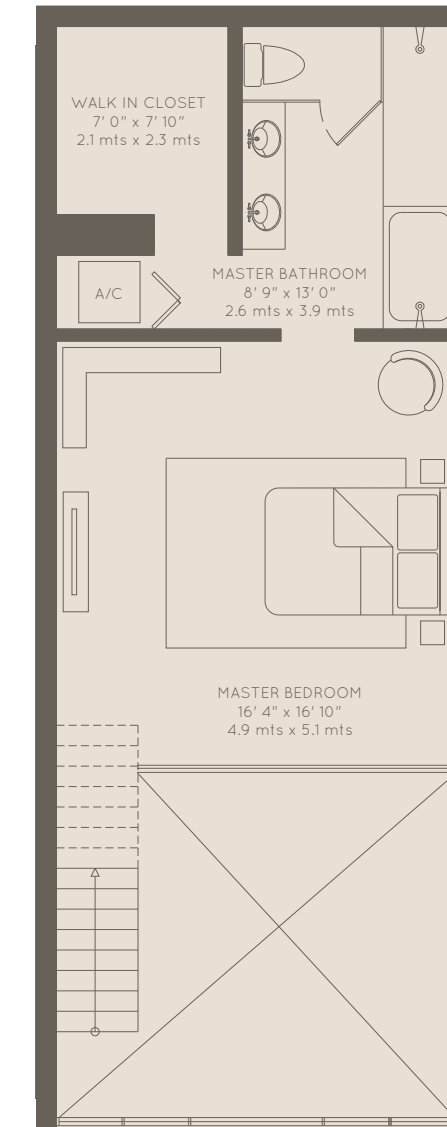
LUXURIOUSLY DESIGNED BATHROOMS  
WITH MODERN FINISHES



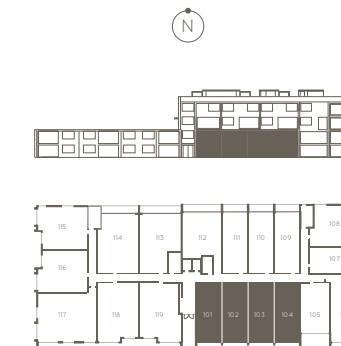




LOWER LEVEL



UPPER LEVEL



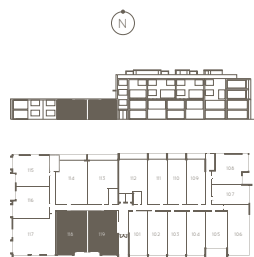
1 BEDROOM + DEN / 2 BATH

- LOWER LEVEL: 701 sqft / 65.12 m<sup>2</sup>
- UPPER LEVEL: 515 sqft / 47.84 m<sup>2</sup>
- TOTAL AREA: 1,216 sqft / 112.96 m<sup>2</sup>

COURTVIEW LOFT

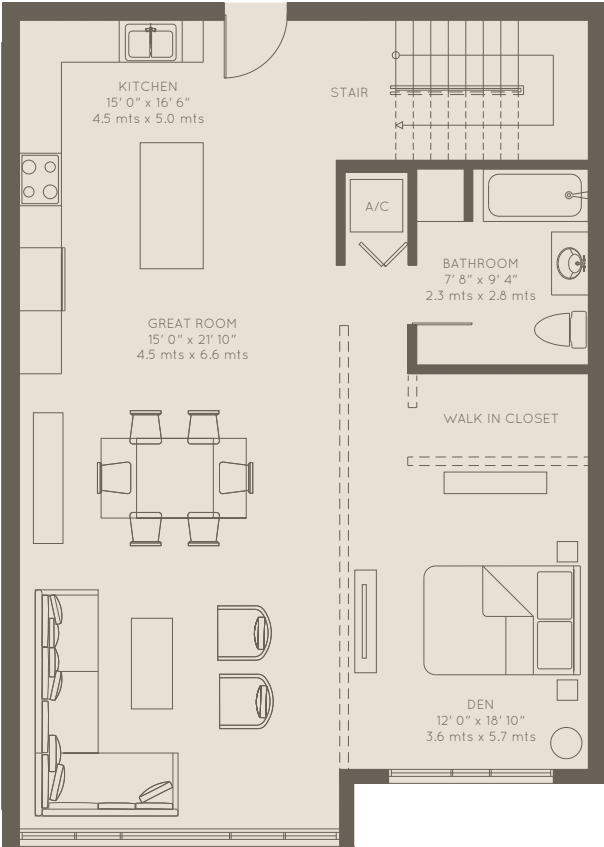


# COURTVIEW HOME

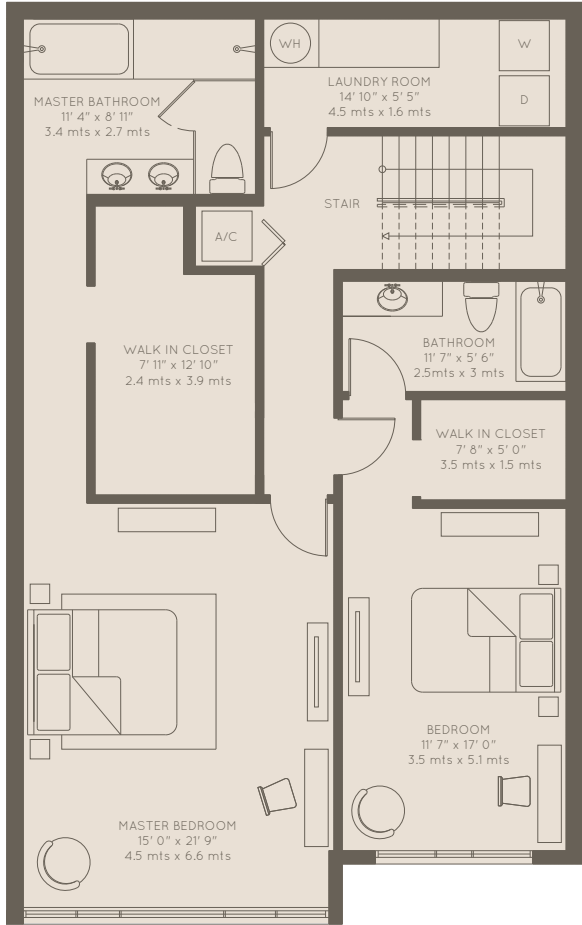


2 BEDROOM + DEN / 3 BATH

- LOWER LEVEL: 1,090 sqft / 101.26 m<sup>2</sup>
- UPPER LEVEL: 1,238 sqft / 115.01 m<sup>2</sup>
- TOTAL AREA: 2,328 sqft / 216.27 m<sup>2</sup>



LOWER LEVEL



UPPER LEVEL







### 2 BEDROOM + DEN / 3 BATH

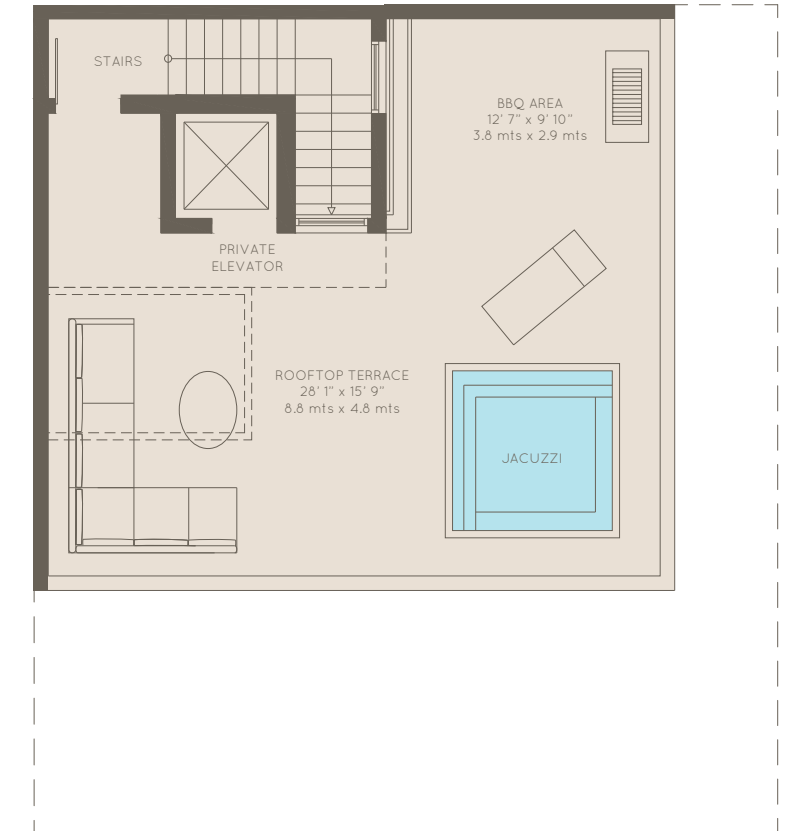
- LOWER LEVEL: 1,180 sqft / 109.6 m<sup>2</sup>
- BALCONY 1: 179 sqft / 16.6 m<sup>2</sup>
- UPPER LEVEL: 1,160 sqft / 107.7 m<sup>2</sup>
- BALCONY 2: 179 sqft / 16.6 m<sup>2</sup>
- ROOFTOP TERRACE (AC): 103 sqft / 9.5 m<sup>2</sup>
- TERRACE: 670 sqft / 62.0 m<sup>2</sup>
- TOTAL AREA: 3,740 sqft / 322.3 m<sup>2</sup>



LOWER LEVEL



UPPER LEVEL



ROOF TERRACE

# COLLINS SKYHOME













# AMENITIES

- The Sunset Terrace with pool, lounge and barbeque areas, enjoying unobstructed views to the incredible sunsets of South Florida
- An enclosed gym with state of the art equipment and an outdoor Yoga Deck
- Storage spaces available in garage level







# ABOUT THE DEVELOPER AND PROJECT TEAM

**Leonardo Ambard** has over 20 years of experience in real estate development. Mr. Ambard has successfully been responsible for the development and operation of a diverse range of real estate assets including residential, hospitality and a variety of mixed used projects.

**Salvador Di Lodovico** is the CEO of, Arpigra, C.A. a leading civil and building construction firm. He has 15 years of development and construction experience managing large commercial projects.

**Architect:** Cristina Fandino

