

BAY HOUSE

MIAMI RESIDENCES



BAY HOUSE

MIAMI RESIDENCES

Wide. Open. Spacious.



BAY HOUSE

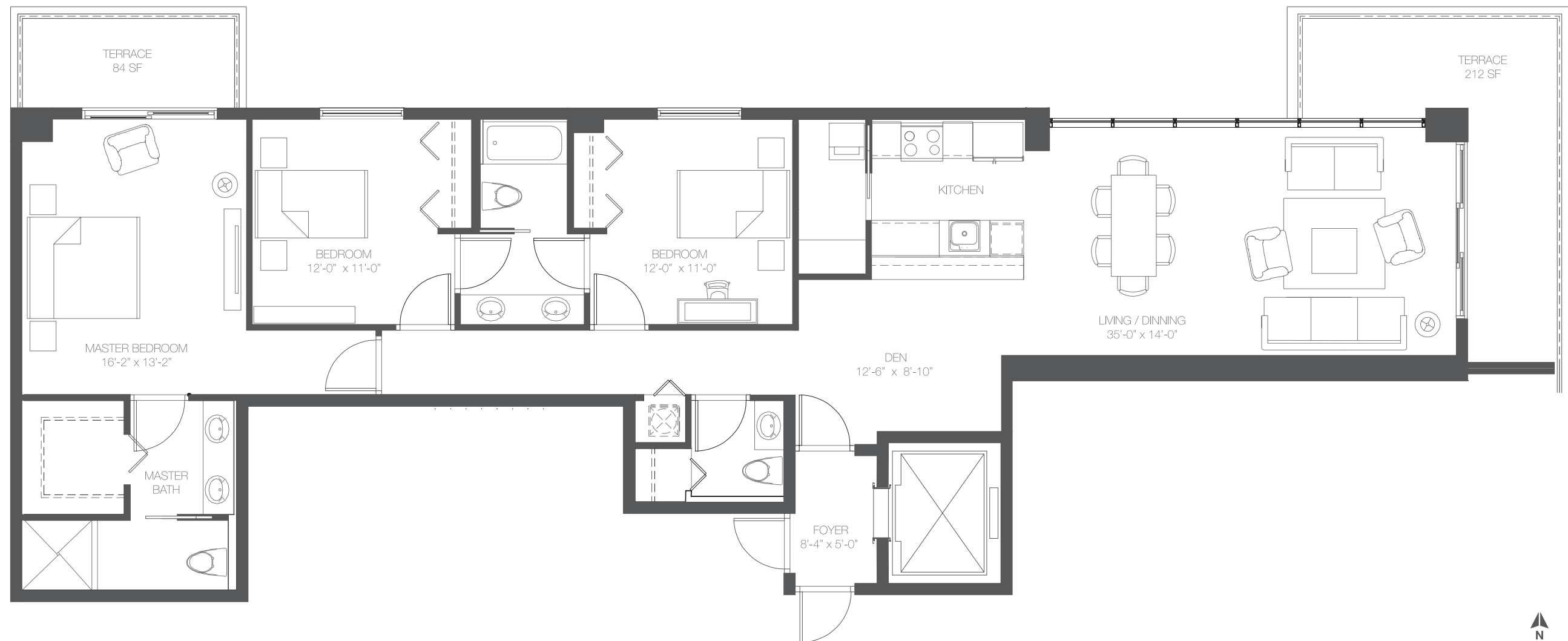
MIAMI RESIDENCES



BAY HOUSE

MIAMI RESIDENCES



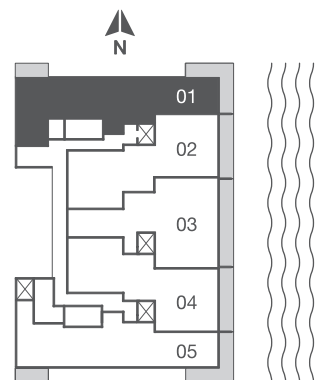


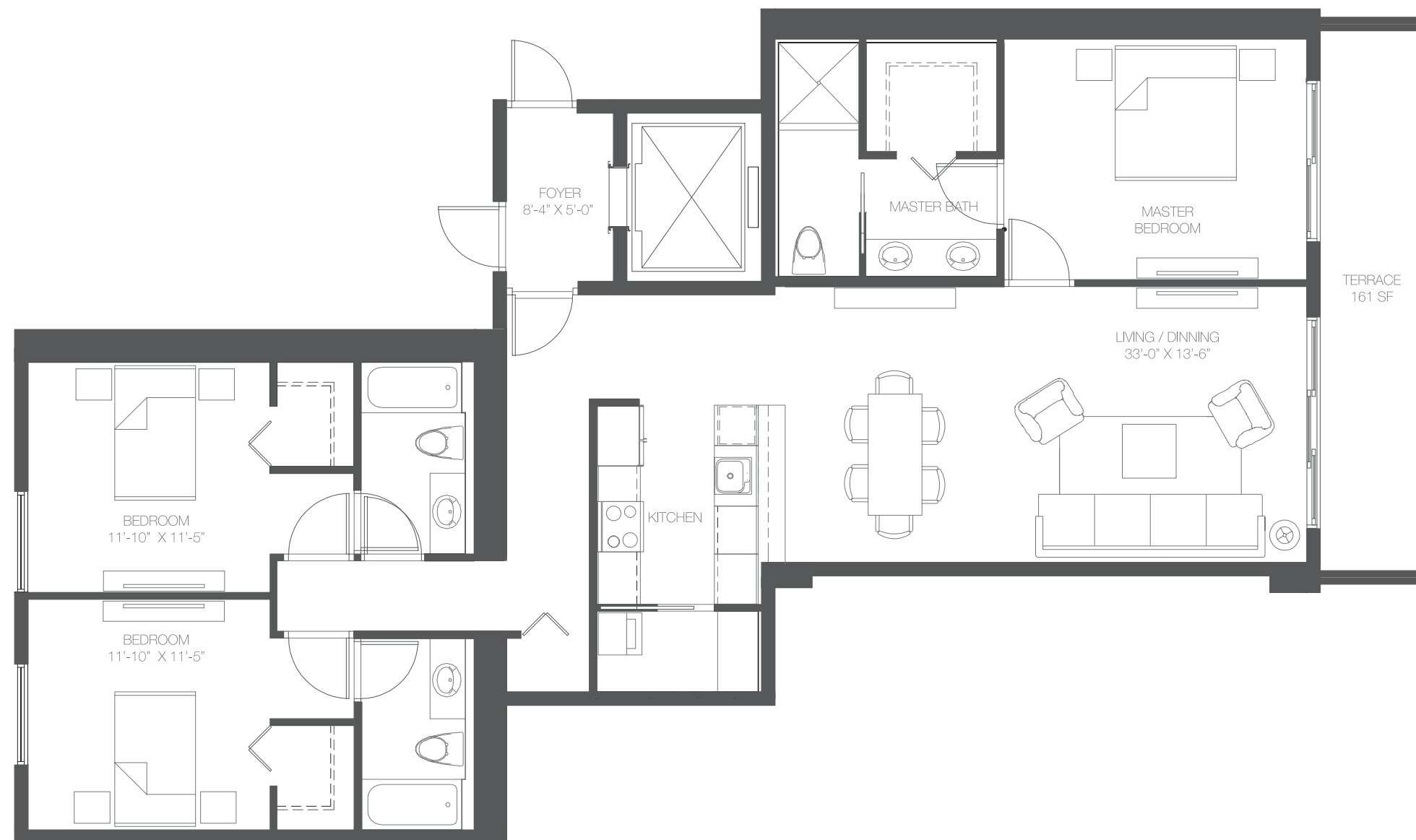
3 BEDROOMS + DEN
2 1/2 BATHROOMS

AC 1,725 SQ. FT. 160 SQ. MT.
TERRACE 296 SQ. FT. 27 SQ. MT.
TOTAL SQ. FT. 2021 SQ. FT. 188 SQ. MT.



All renderings are artist's conception. Stated dimensions are from the exterior boundaries of the exterior walls and the center of the line of the interior demising walls. All dimensions are approximate and all floor plans and development plans are approximate and subject to change. The above scenes are not a part of the Condominium, but are photos to the Greater Miami area.



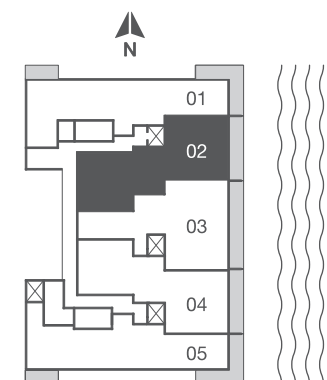


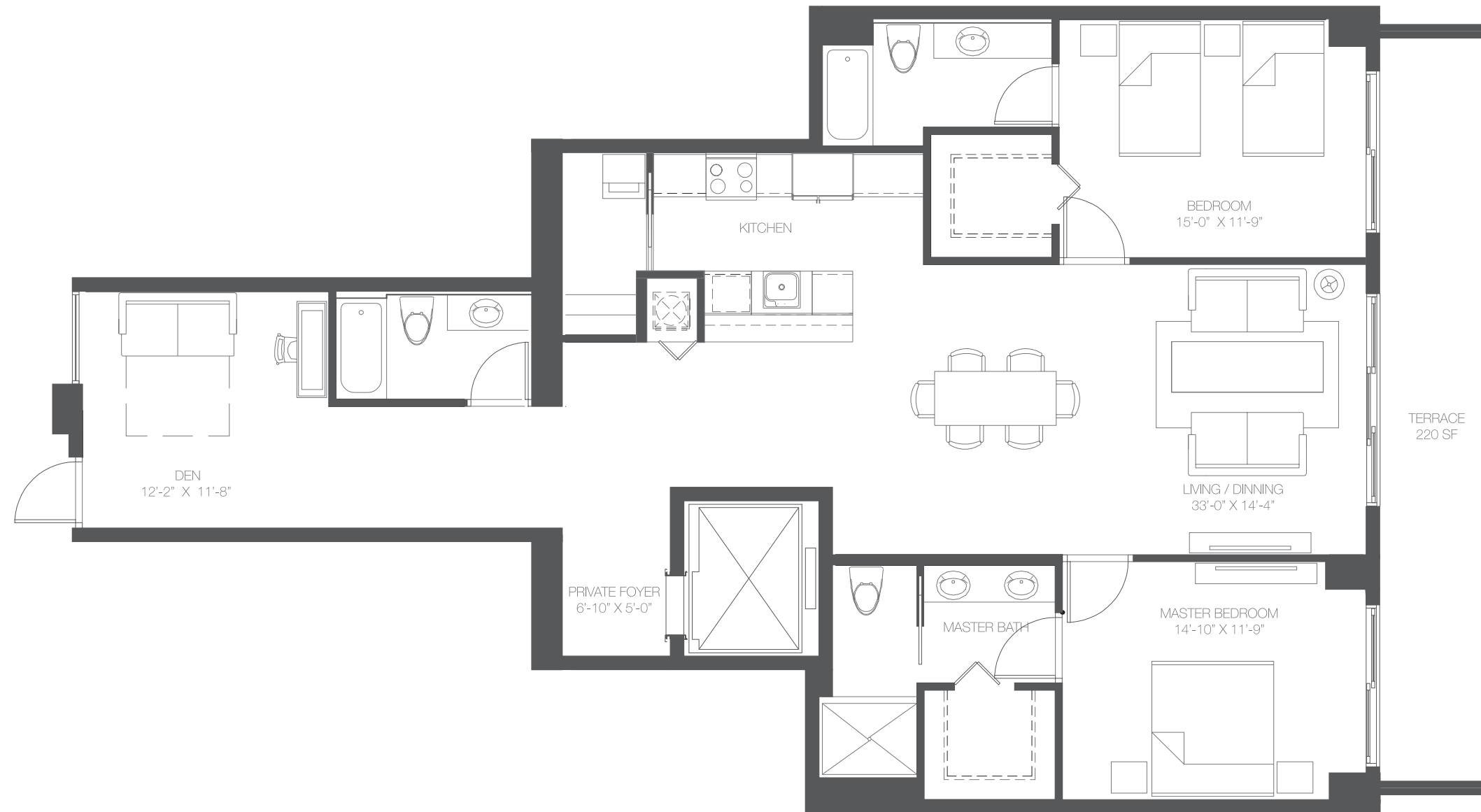
3 BEDROOMS
3 BATHROOMS

AC	1,601 SQ. FT. 148 SQ. MT.
TERRACE	161 SQ. FT. 15 SQ. MT.
TOTAL SQ. FT.	1762 SQ. FT. 163 SQ. MT.



All renderings are artist's conception. Stated dimensions are from the exterior boundaries of the exterior walls and the center of the line of the interior demising walls. All dimensions are approximate and all floor plans and development plans are approximate and subject to change. The above scenes are not a part of the Condominium, but are photos to the Greater Miami area.



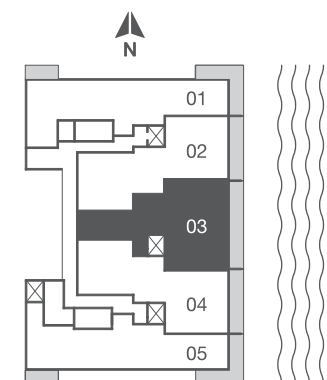


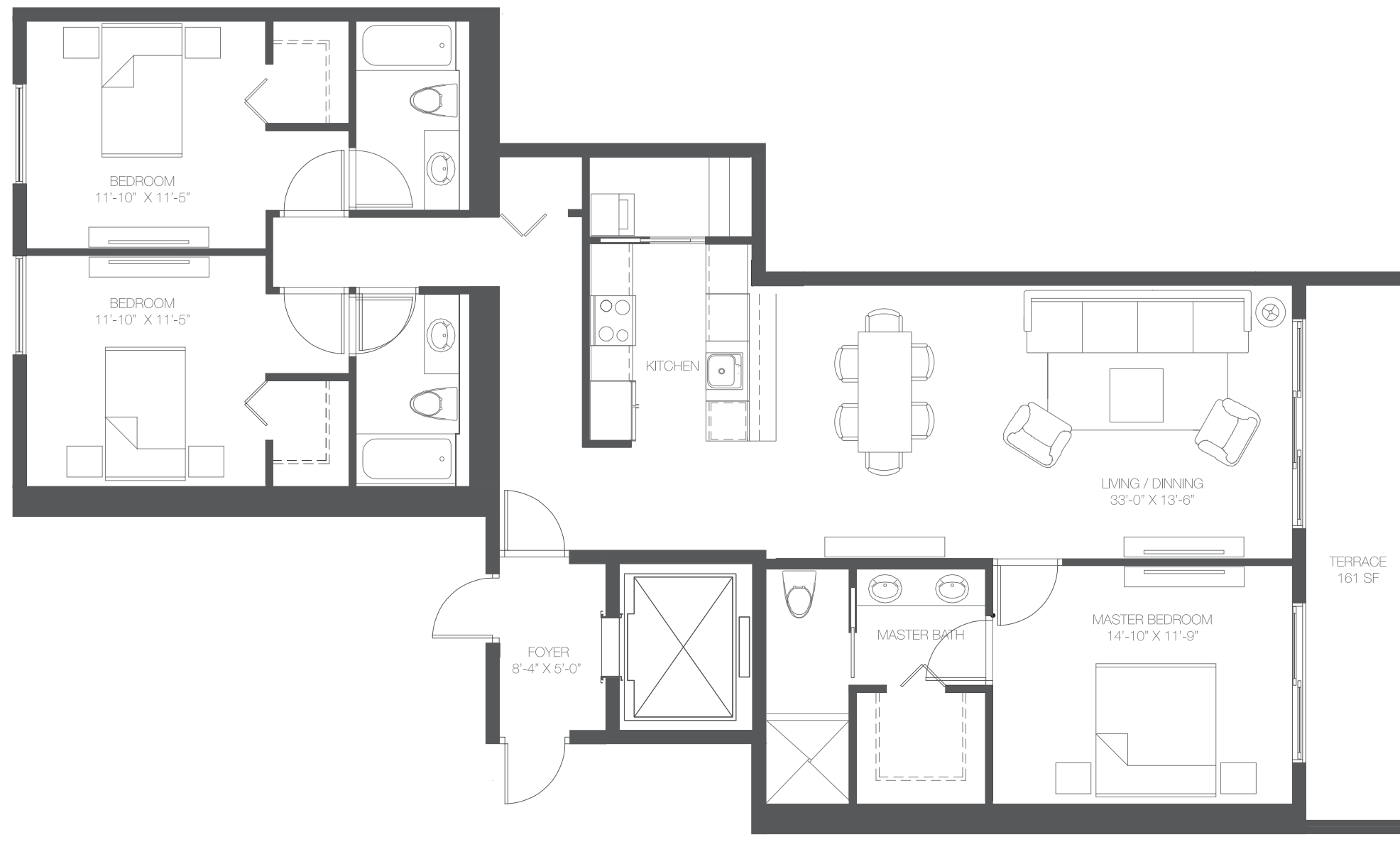
2 BEDROOMS + DEN
3 BATHROOMS

AC	1,646 SQ. FT. 153 SQ. MT.
TERRACE	220 SQ. FT. 20 SQ. MT.
TOTAL SQ. FT.	1866 SQ. FT. 173 SQ. MT.



All renderings are artist's conception. Stated dimensions are from the exterior boundaries of the exterior walls and the center of the line of the interior demising walls. All dimensions are approximate and all floor plans and development plans are approximate and subject to change. The above scenes are not a part of the Condominium, but are photos to the Greater Miami area.



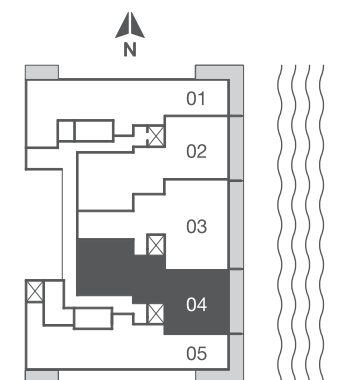


3 BEDROOMS
3 BATHROOMS

AC	1,601 SQ. FT. 148 SQ. MT.
TERRACE	161 SQ. FT. 15 SQ. MT.
TOTAL SQ. FT.	1762 SQ. FT. 163 SQ. MT.



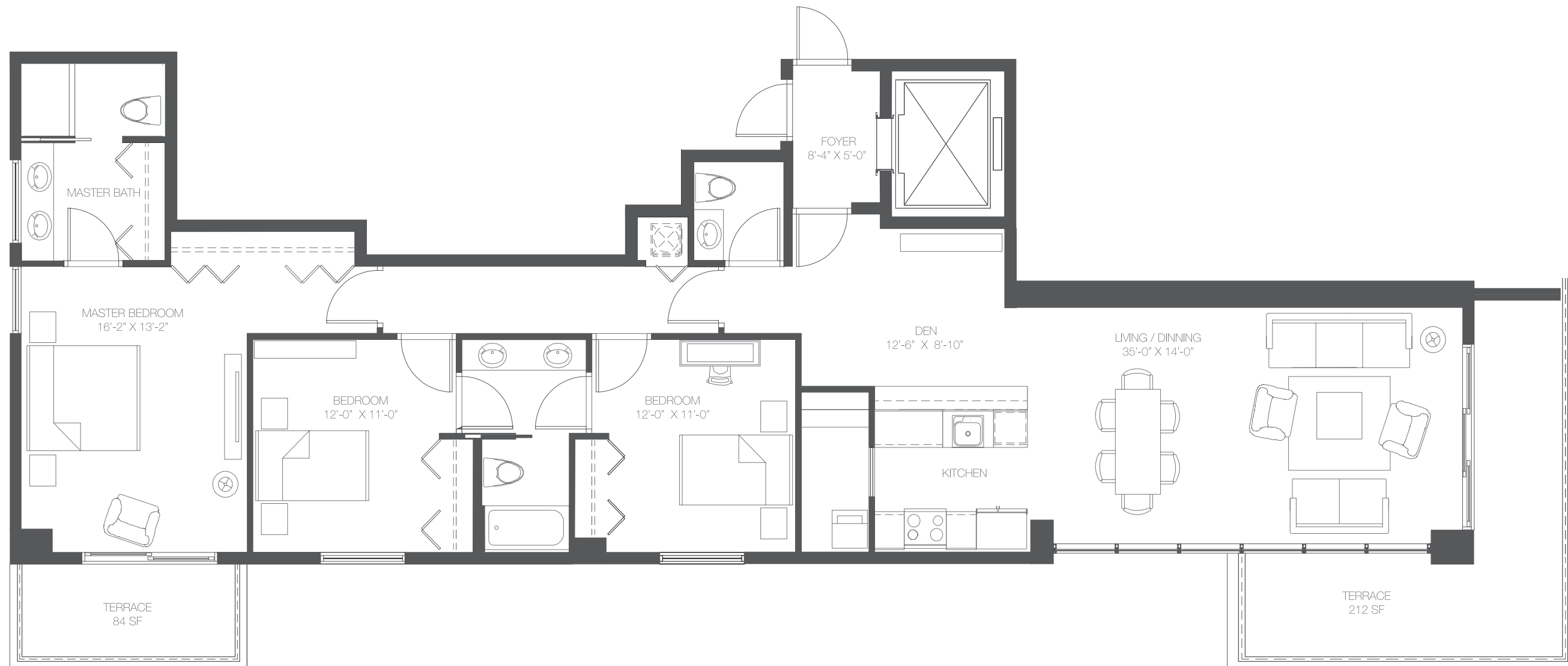
All renderings are artist's conception. Stated dimensions are from the exterior boundaries of the exterior walls and the center of the line of the interior demising walls. All dimensions are approximate and all floor plans and development plans are approximate and subject to change. The above scenes are not a part of the Condominium, but are photos to the Greater Miami area.



BAY HOUSE

MIAMI RESIDENCES

RESIDENCE /05

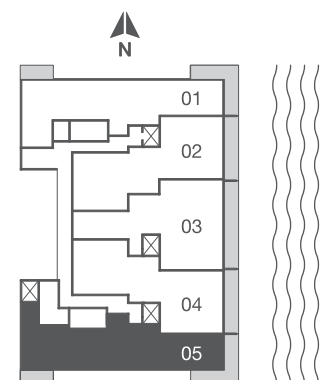


3 BEDROOMS + DEN
2 1/2 BATHROOMS

AC	1,677 SQ. FT. 155 SQ. MT.
TERRACE	296 SQ. FT. 28 SQ. MT.
TOTAL SQ. FT.	1973 SQ. FT. 183 SQ. MT.



All renderings are artist's conception. Stated dimensions are from the exterior boundaries of the exterior walls and the center of the line of the interior demising walls. All dimensions are approximate and all floor plans and development plans are approximate and subject to change. The above scenes are not a part of the Condominium, but are photos to the Greater Miami area.



BAY HOUSE

MIAMI RESIDENCES



Melo Group is a father and sons team committed to high quality, affordable construction. Their 50 year expertise spearheaded by Jose Luis Melo, father; has inspired sons, Carlos and Martin Melo, to build and deliver quality buildings in the Miami Biscayne Corridor and Brickell area since 2001. With 9 buildings under their belt and more to come MELO Group are the builders of choice in the upcoming “Edgewater” residential neighborhood of Miami.

Melo Group’s keen insight to Miami’s up and coming locations of choice has given way to the realization of BAY HOUSE, the next luxury condo in the Art and Entertainment district of Miami better known to locals as “Edgewater.”

BAY HOUSE, residences’s distinctive bay view location is in the heart of Miami’s urban residential growth, where development is underway for the new generation of restaurants, entertainment and shopping. This is where Melo Group is going... straight into the future of Miami’s residential expansion where the cultural and arts growth of the city know no limits...

BRICKELL FINANCIAL DISTRICT

ONE PLAZA (2009)

OAK PLAZA (2012)

DOWNTOWN MIAMI

FLAGLER ON THE RIVER (2014)

1800 BISCAYNE PLAZA (2005)

UNDER DESIGN

22 BISCAYNE BAY (2003)

SKYVIEW (2013)

WYNWOOD

23 BISCAYNE BAY (2012)

25 BISCAYNE PLAZA (2007)

MIDTOWN MIAMI

SECOND PLAZA (2011)

MIAMI DESIGN DISTRICT



BAY HOUSE

MIAMI RESIDENCES



NC Studio is a multi-disciplinary firm that focuses on architecture, interiors, lighting, and furniture design. The firm has a comprehensive approach that spans from the programming phase through the design and specification of interior details. NC Studio has been producing award-winning work since 1998 and has been a design partner with some of the nation's leading developers.

