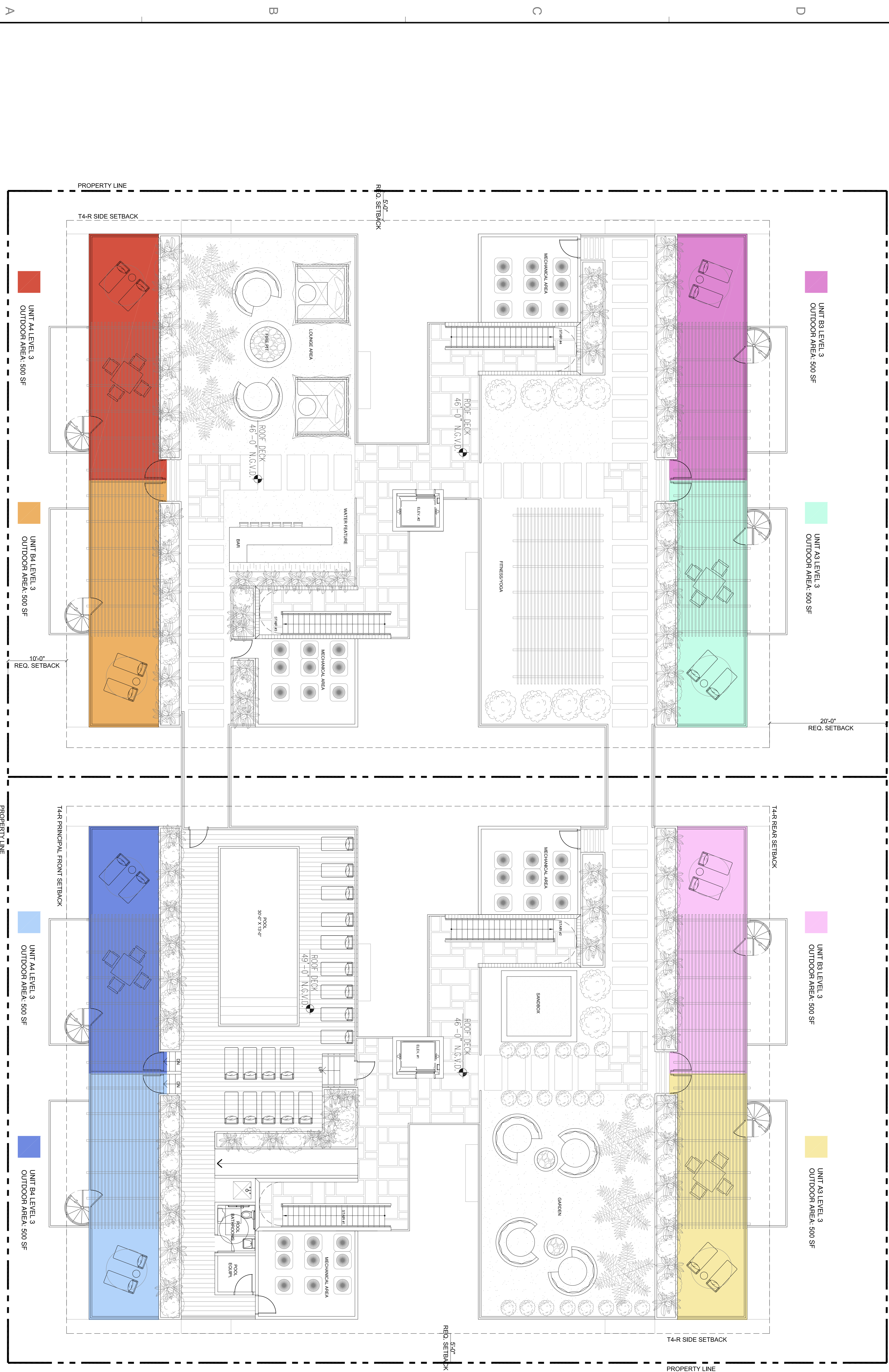




Eleven In The Roads - Miami, Florida

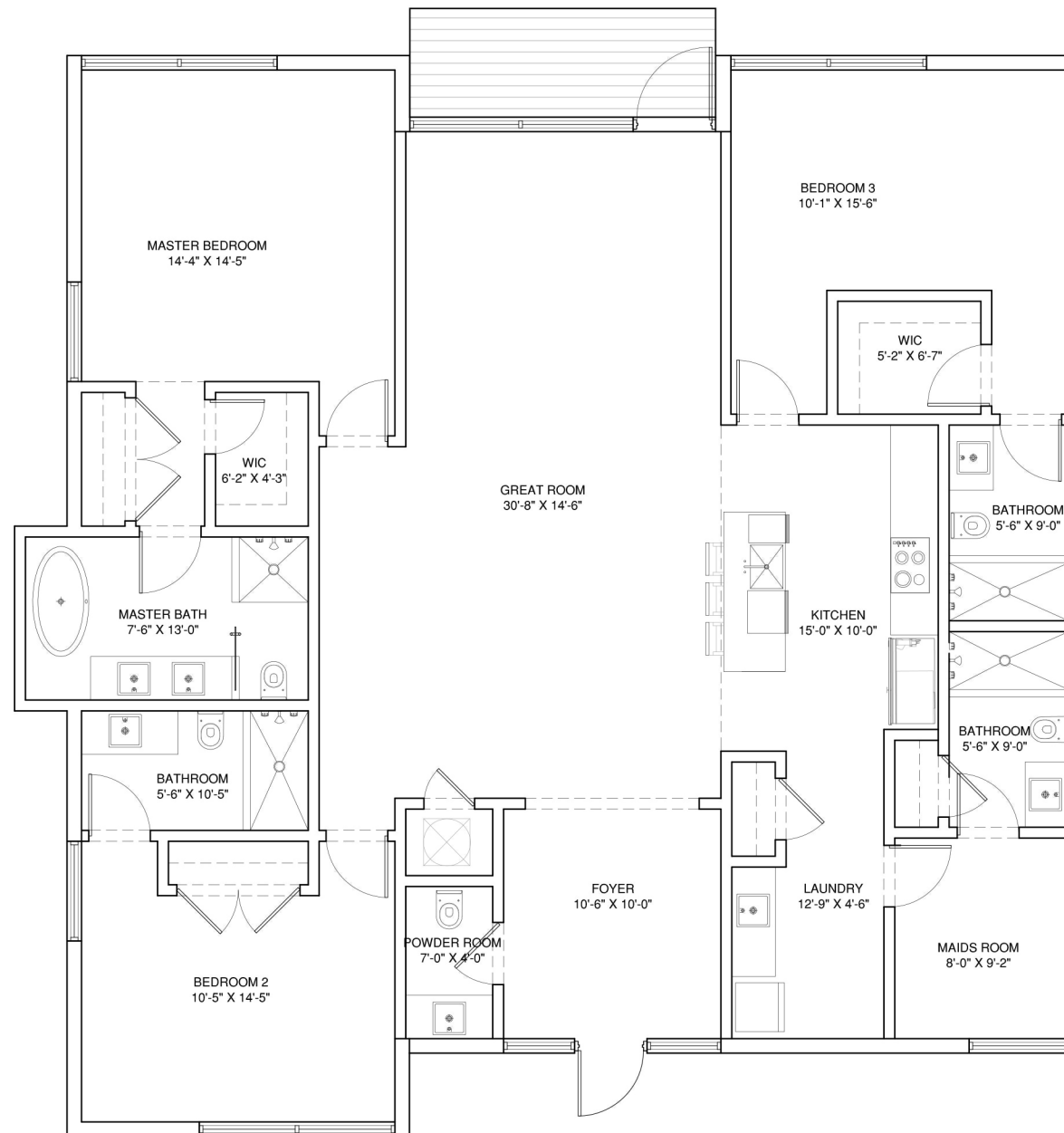






ELEVEN

IN THE ROADS

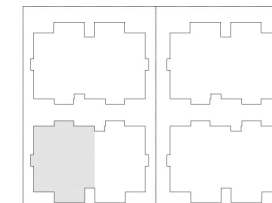


UNIT A1

4 BED/4.5 BATH

A/C INTERIOR AREA	2,179 SF
TERRACE AREA	1,454 SF
TOTAL RESIDENCE	3,633 SF

LEVEL 1



NOTE: AREAS ARE TAKEN FROM THE OUTER EDGE OF THE EXTERIOR WALLS TO THE CENTERLINE OF THE DEMISING WALLS AND STAIRCASES.

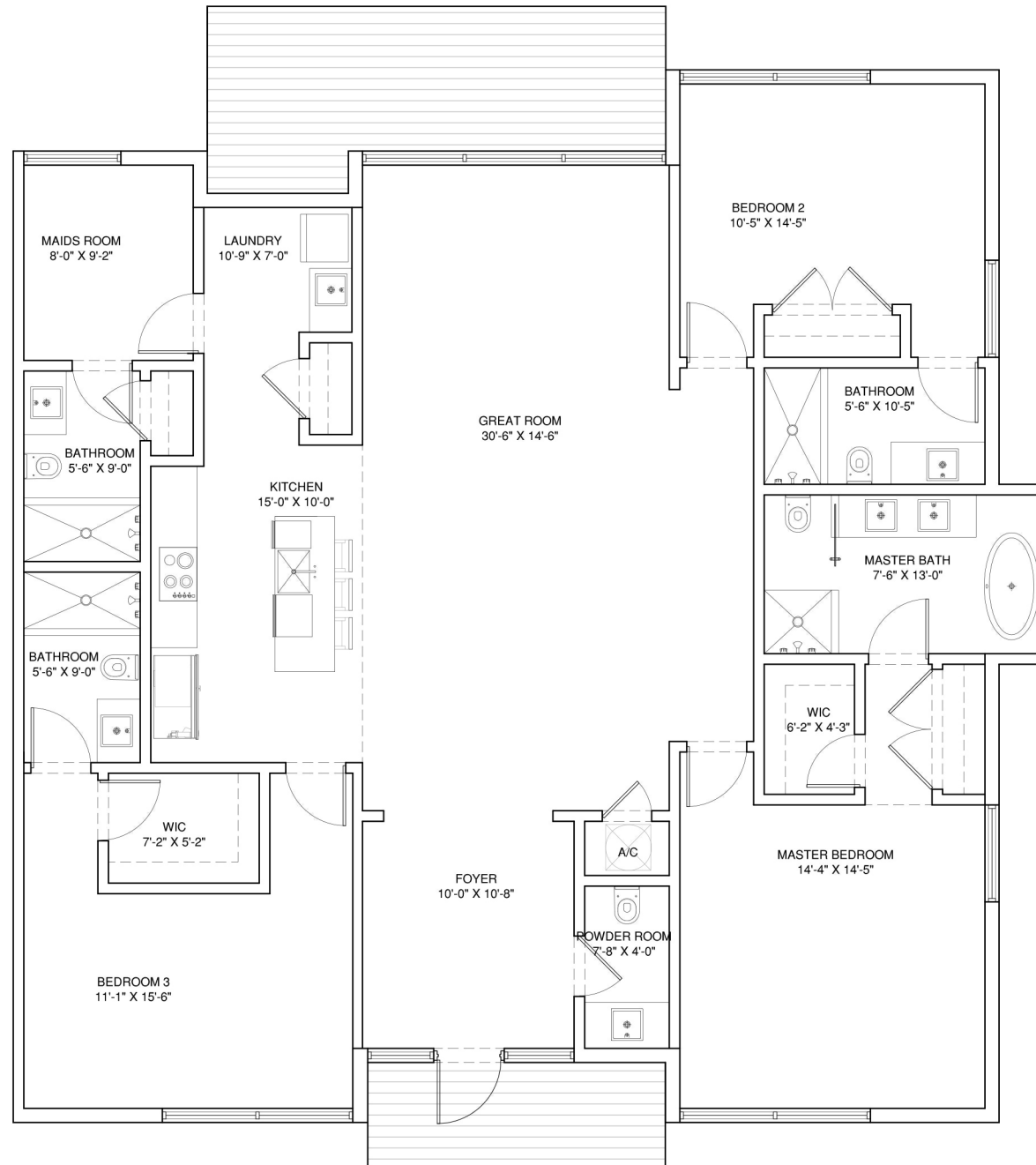


The dimensions of the Unit shown on this floor plan has been calculated from the exterior boundaries of the exterior walls to the centerline of interior demising walls, including common elements such as structural walls and other interior structural components of the building and in fact vary from the dimensions that would be determined by using the description and definition of the "Unit" set forth in the Prospectus and the Declaration. The configuration and use of space or the floor plan design may vary from that in the Prospectus and Declaration because the Developer has reserved the right in the Prospectus to make design, dimension, specification, and plan changes at any time, in the Developer's discretion, without notice to Unit buyers. The measurements of rooms set forth on these floor plans are generally taken at the greatest points of each given room (as if the room were a perfect rectangle). All dimensions are approximate and may vary with actual construction, and all floor plans and development plans are subject to change. All furnishings and décor illustrated are not included with the purchase of the Unit. See Prospectus for additional information regarding what is offered with the Unit and the calculation of Unit square footage and dimensions.



ELEVEN

IN THE ROADS

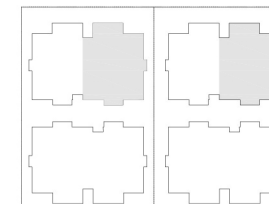


UNIT A3

4 BED/4.5 BATH

A/C INTERIOR AREA	2,166 SF
TERRACE AREA	*VARIES
TOTAL RESIDENCE	*VARIES
*REFER TO KEY SITE PLAN	

LEVEL 1



NOTE: AREAS ARE TAKEN FROM THE OUTER EDGE OF THE EXTERIOR WALLS TO THE CENTERLINE OF THE DEMISING WALLS AND STAIRCASES.

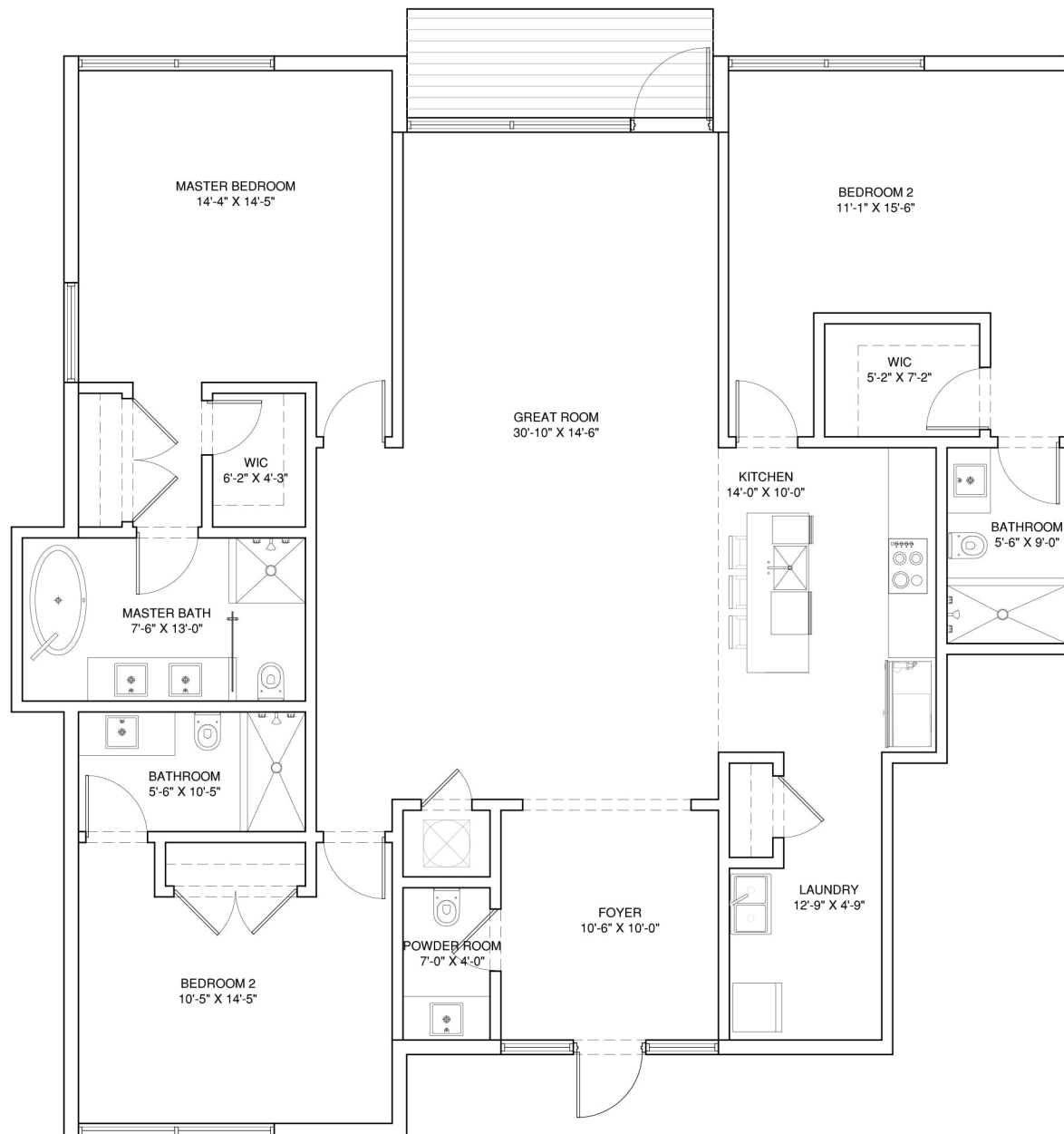


The dimensions of the Unit shown on this floor plan has been calculated from the exterior boundaries of the exterior walls to the centerline of interior demising walls, including common elements such as structural walls and other interior structural components of the building and in fact vary from the dimensions that would be determined by using the description and definition of the "Unit" set forth in the Prospectus and the Declaration. The configuration and use of space or the floor plan design may vary from that in the Prospectus and Declaration because the Developer has reserved the right in the Prospectus to make design, dimension, specification, and plan changes at any time, in the Developer's discretion, without notice to Unit buyers. The measurements of rooms set forth on these floor plans are generally taken at the greatest points of each given room (as if the room were a perfect rectangle). All dimensions are approximate and may vary with actual construction, and all floor plans and development plans are subject to change. All furnishings and décor illustrated are not included with the purchase of the Unit. See Prospectus for additional information regarding what is offered with the Unit and the calculation of Unit square footage and dimensions.



ELEVEN

IN THE ROADS

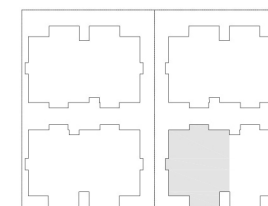


UNIT A2

3 BED/3.5 BATH

A/C INTERIOR AREA	2,035 SF
TERRACE AREA	866 SF
TOTAL RESIDENCE	2,901 SF

LEVEL 1



NOTE: AREAS ARE TAKEN FROM THE OUTER EDGE OF THE EXTERIOR WALLS TO THE CENTERLINE OF THE DEMISING WALLS AND STAIRCASES.

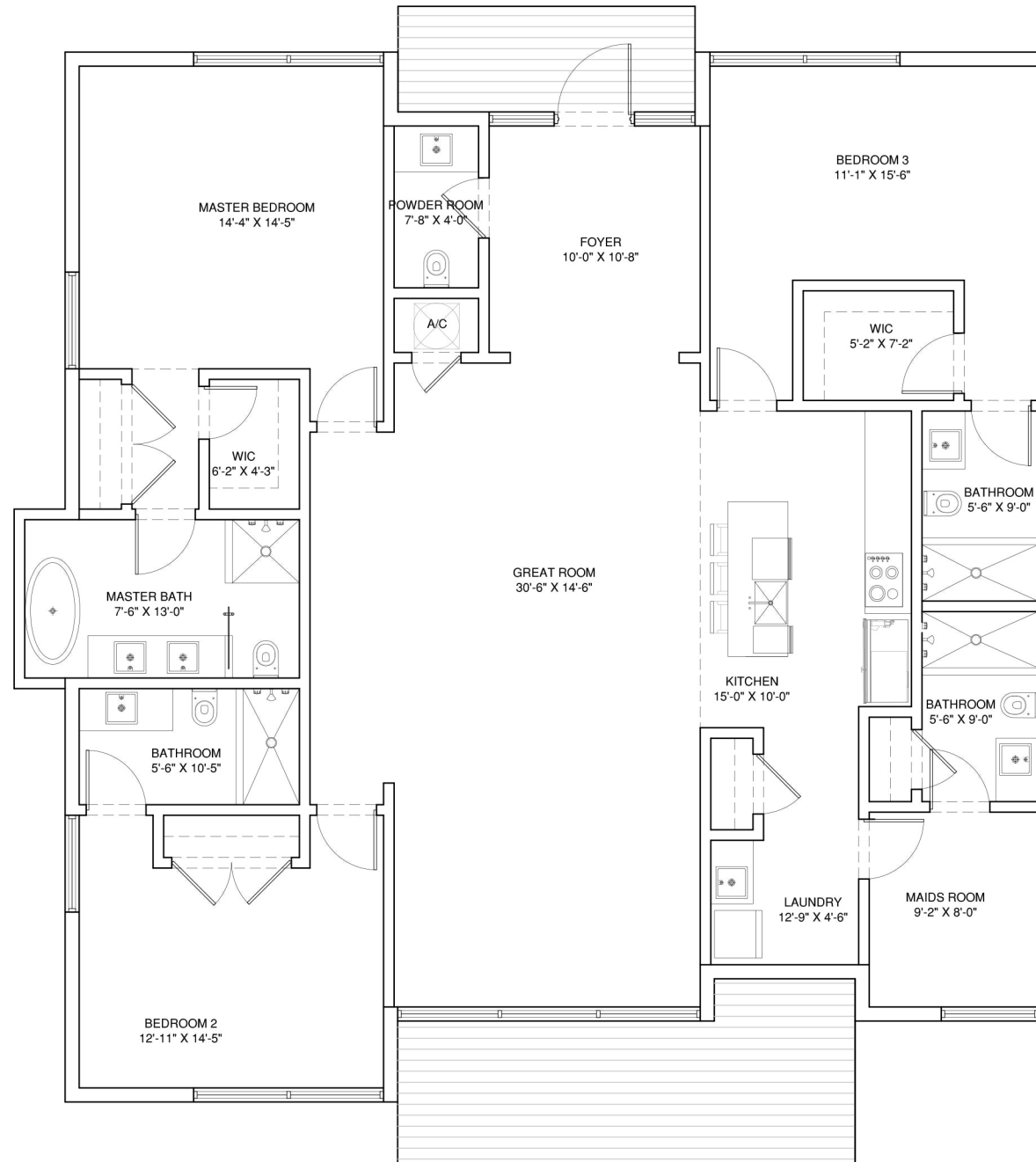


The dimensions of the Unit shown on this floor plan has been calculated from the exterior boundaries of the exterior walls to the centerline of interior demising walls, including common elements such as structural walls and other interior structural components of the building and in fact vary from the dimensions that would be determined by using the description and definition of the "Unit" set forth in the Prospectus and the Declaration. The configuration and use of space or the floor plan design may vary from that in the Prospectus and Declaration because the Developer has reserved the right in the Prospectus to make design, dimension, specification, and plan changes at any time, in the Developer's discretion, without notice to Unit buyers. The measurements of rooms set forth on these floor plans are generally taken at the greatest points of each given room (as if the room were a perfect rectangle). All dimensions are approximate and may vary with actual construction, and all floor plans and development plans are subject to change. All furnishings and décor illustrated are not included with the purchase of the Unit. See Prospectus for additional information regarding what is offered with the Unit and the calculation of Unit square footage and dimensions.



ELEVEN

IN THE ROADS

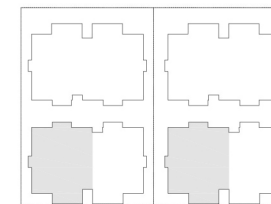


UNIT A4

4 BED/4.5 BATH

A/C INTERIOR AREA	2,166 SF
TERRACE AREA	232 SF
TOTAL RESIDENCE	2,398 SF

LEVEL 2



NOTE: AREAS ARE TAKEN FROM THE OUTER EDGE OF THE EXTERIOR WALLS TO THE CENTERLINE OF THE DEMISING WALLS AND STAIRCASES.

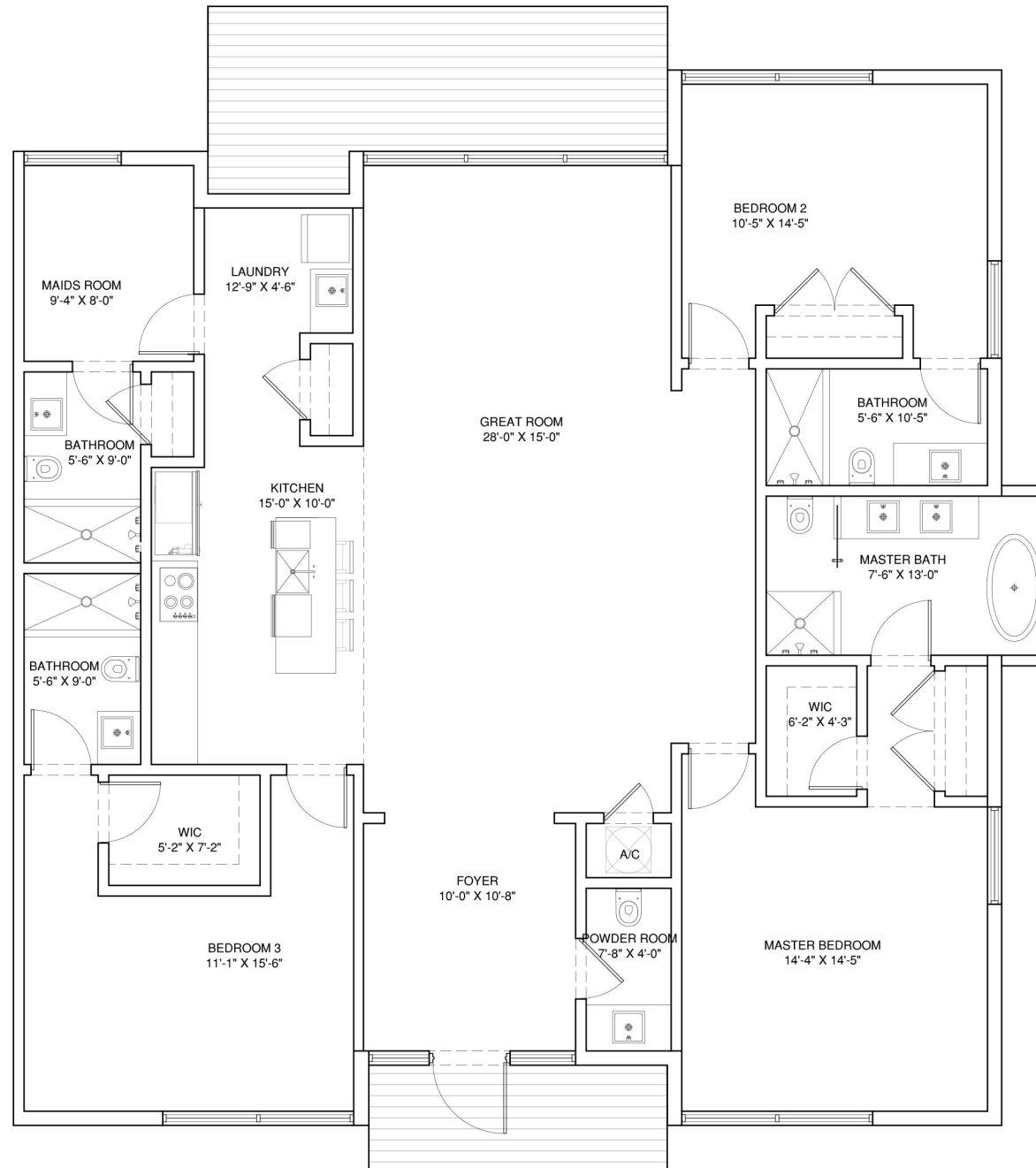


The dimensions of the Unit shown on this floor plan has been calculated from the exterior boundaries of the exterior walls to the centerline of interior demising walls, including common elements such as structural walls and other interior structural components of the building and in fact vary from the dimensions that would be determined by using the description and definition of the "Unit" set forth in the Prospectus and the Declaration. The configuration and use of space or the floor plan design may vary from that in the Prospectus and Declaration because the Developer has reserved the right in the Prospectus to make design, dimension, specification, and plan changes at any time, in the Developer's discretion, without notice to Unit buyers. The measurements of rooms set forth on these floor plans are generally taken at the greatest points of each given room (as if the room were a perfect rectangle). All dimensions are approximate and may vary with actual construction, and all floor plans and development plans are subject to change. All furnishings and décor illustrated are not included with the purchase of the Unit. See Prospectus for additional information regarding what is offered with the Unit and the calculation of Unit square footage and dimensions.



ELEVEN

IN THE ROADS

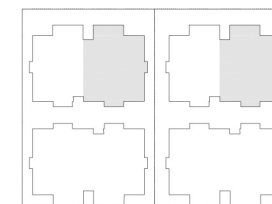


UNIT A3

4 BED/4.5 BATH

A/C INTERIOR AREA	2,166 SF
TERRACE AREA	232 SF
TOTAL RESIDENCE	2,398 SF

LEVEL 2



NOTE: AREAS ARE TAKEN FROM THE OUTER EDGE OF THE EXTERIOR WALLS TO THE CENTERLINE OF THE DEMISING WALLS AND STAIRCASES.

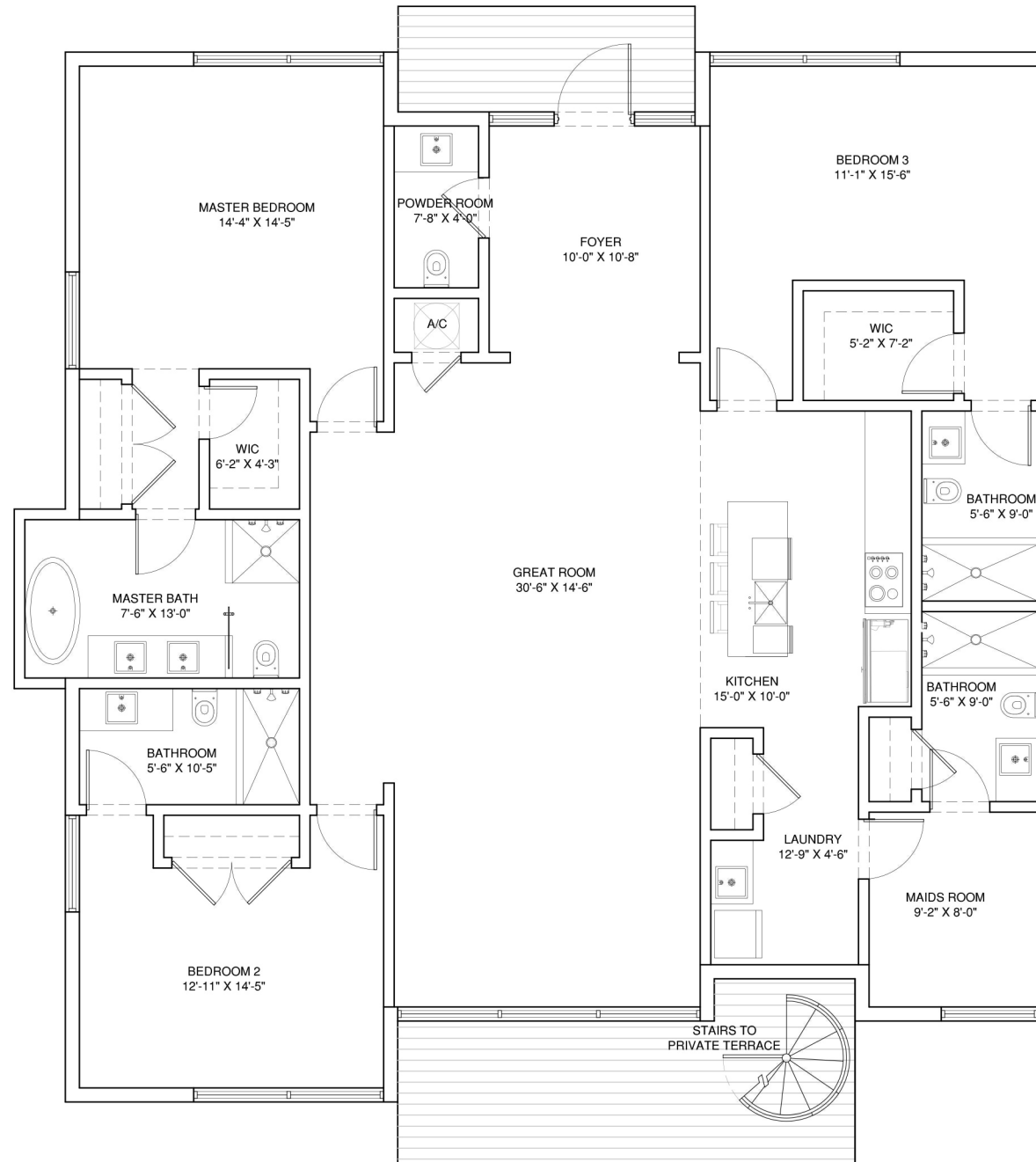


The dimensions of the Unit shown on this floor plan has been calculated from the exterior boundaries of the exterior walls to the centerline of interior demising walls, including common elements such as structural walls and other interior structural components of the building and in fact vary from the dimensions that would be determined by using the description and definition of the "Unit" set forth in the Prospectus and the Declaration. The configuration and use of space or the floor plan design may vary from that in the Prospectus and Declaration because the Developer has reserved the right in the Prospectus to make design, dimension, specification, and plan changes at any time, in the Developer's discretion, without notice to Unit buyers. The measurements of rooms set forth on these floor plans are generally taken at the greatest points of each given room (as if the room were a perfect rectangle). All dimensions are approximate and may vary with actual construction, and all floor plans and development plans are subject to change. All furnishings and décor illustrated are not included with the purchase of the Unit. See Prospectus for additional information regarding what is offered with the Unit and the calculation of Unit square footage and dimensions.



ELEVEN

IN THE ROADS

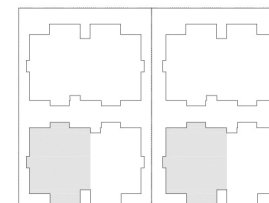


UNIT A4 DELUXE

4 BED/4.5 BATH

A/C INTERIOR AREA	2,166 SF
TERRACE AREA	232 SF
PRIVATE ROOF TERR.	500 SF
TOTAL RESIDENCE	2,898 SF

LEVEL 3



NOTE: AREAS ARE TAKEN FROM THE OUTER EDGE OF THE EXTERIOR WALLS TO THE CENTERLINE OF THE DEMISING WALLS AND STAIRCASES.

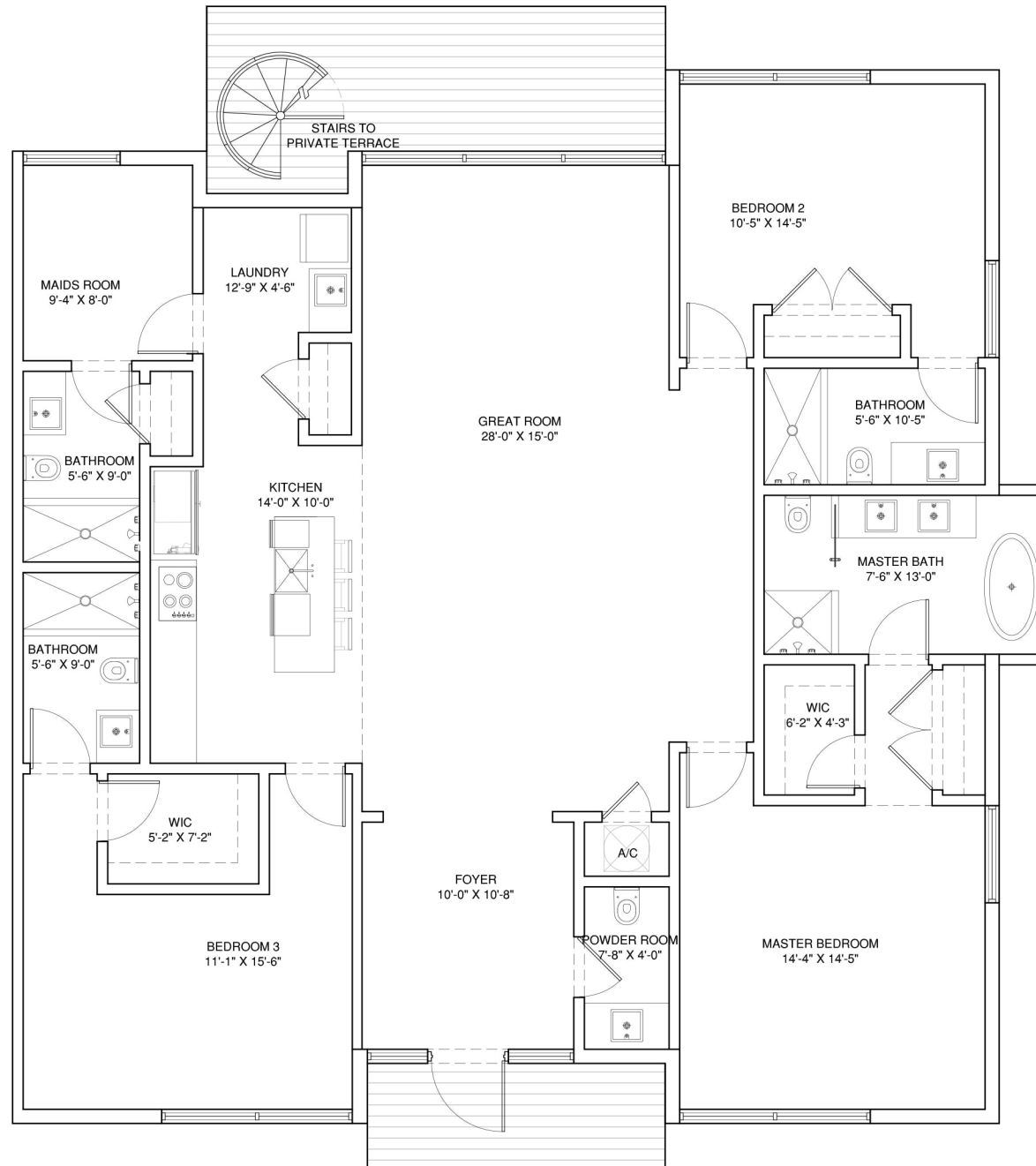


The dimensions of the Unit shown on this floor plan has been calculated from the exterior boundaries of the exterior walls to the centerline of interior demising walls, including common elements such as structural walls and other interior structural components of the building and in fact vary from the dimensions that would be determined by using the description and definition of the "Unit" set forth in the Prospectus and the Declaration. The configuration and use of space or the floor plan design may vary from that in the Prospectus and Declaration because the Developer has reserved the right in the Prospectus to make design, dimension, specification, and plan changes at any time, in the Developer's discretion, without notice to Unit buyers. The measurements of rooms set forth on these floor plans are generally taken at the greatest points of each given room (as if the room were a perfect rectangle). All dimensions are approximate and may vary with actual construction, and all floor plans and development plans are subject to change. All furnishings and décor illustrated are not included with the purchase of the Unit. See Prospectus for additional information regarding what is offered with the Unit and the calculation of Unit square footage and dimensions.



ELEVEN

IN THE ROADS

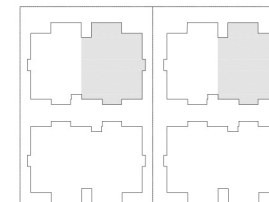


UNIT A3 DELUXE

4 BED/4.5 BATH

A/C INTERIOR AREA	2,166 SF
TERRACE AREA	232 SF
PRIVATE ROOF TERR.	500 SF
TOTAL RESIDENCE	2,898 SF

LEVEL 3



NOTE: AREAS ARE TAKEN FROM THE OUTER EDGE OF THE EXTERIOR WALLS TO THE CENTERLINE OF THE DEMISING WALLS AND STAIRCASES.

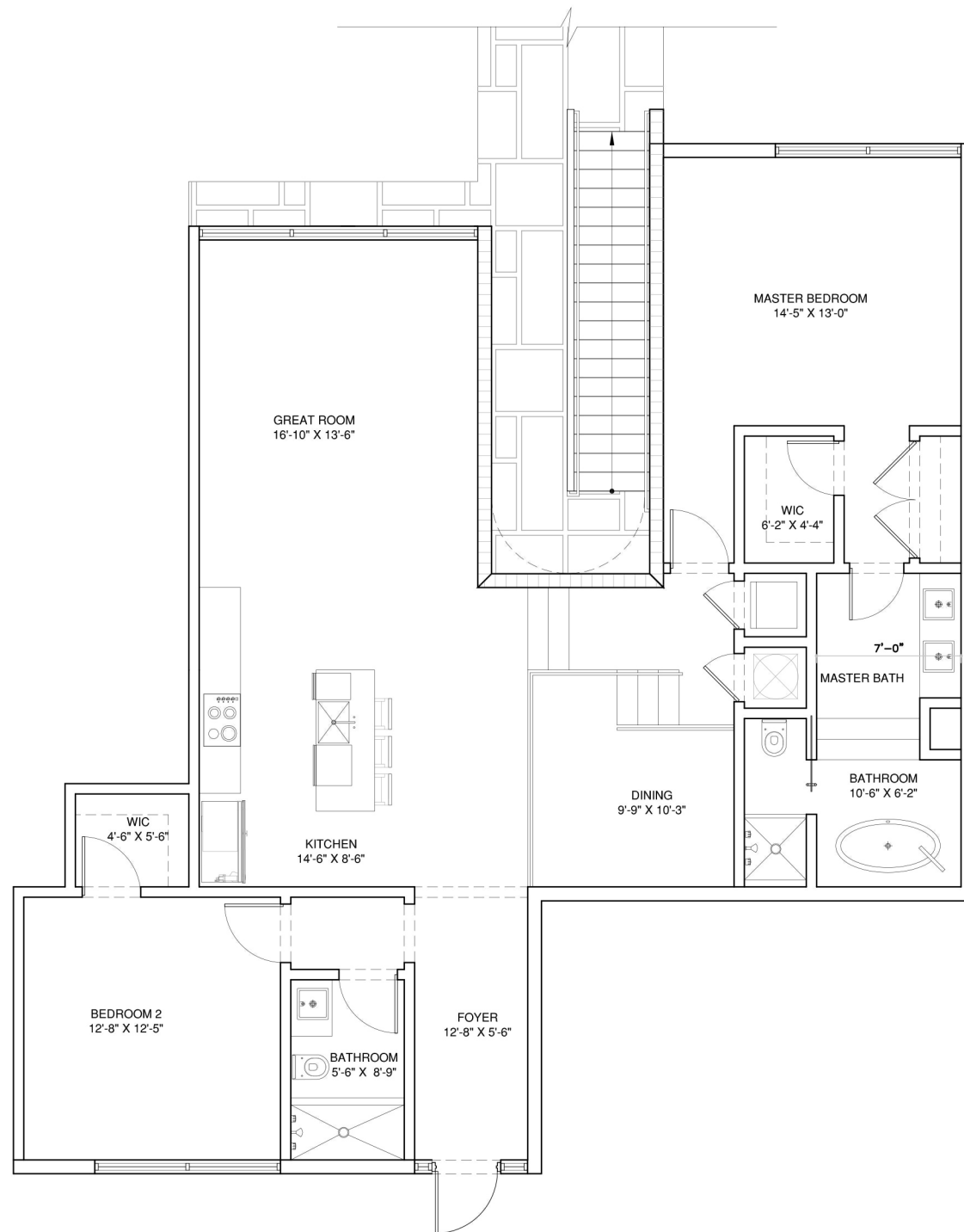


The dimensions of the Unit shown on this floor plan has been calculated from the exterior boundaries of the exterior walls to the centerline of interior demising walls, including common elements such as structural walls and other interior structural components of the building and in fact vary from the dimensions that would be determined by using the description and definition of the "Unit" set forth in the Prospectus and the Declaration. The configuration and use of space or the floor plan design may vary from that in the Prospectus and Declaration because the Developer has reserved the right in the Prospectus to make design, dimension, specification, and plan changes at any time, in the Developer's discretion, without notice to Unit buyers. The measurements of rooms set forth on these floor plans are generally taken at the greatest points of each given room (as if the room were a perfect rectangle). All dimensions are approximate and may vary with actual construction, and all floor plans and development plans are subject to change. All furnishings and décor illustrated are not included with the purchase of the Unit. See Prospectus for additional information regarding what is offered with the Unit and the calculation of Unit square footage and dimensions.



ELEVEN

IN THE ROADS

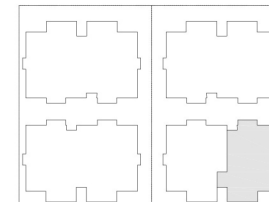


UNIT B2

2 BED/2 BATH

A/C INTERIOR AREA	1,529 SF
TERRACE/YARD AREA	520 SF
TOTAL RESIDENCE	2,049 SF

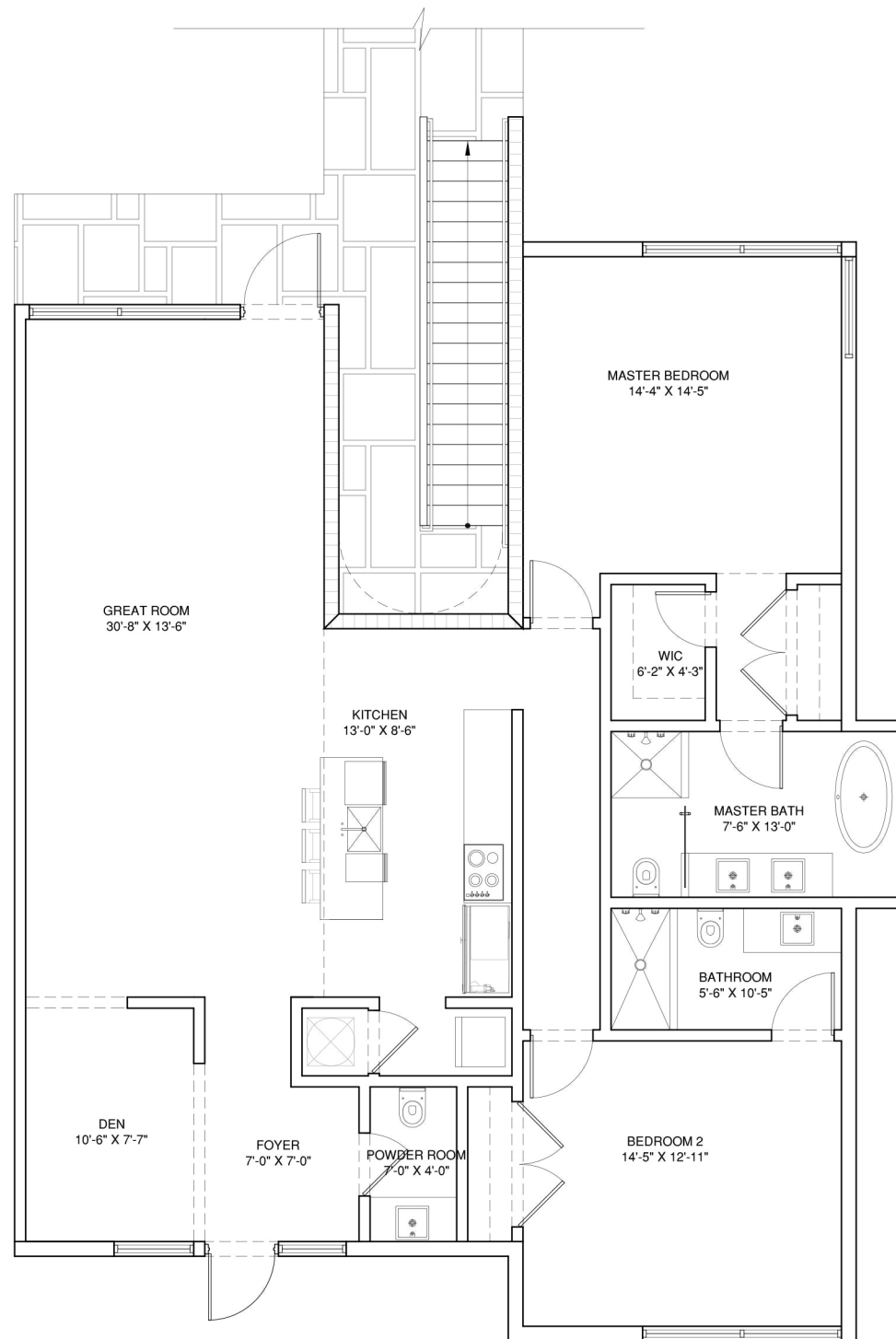
LEVEL 1



NOTE: AREAS ARE TAKEN FROM THE OUTER EDGE OF THE EXTERIOR WALLS TO THE CENTERLINE OF THE DEMISING WALLS AND STAIRCASES.



The dimensions of the Unit shown on this floor plan has been calculated from the exterior boundaries of the exterior walls to the centerline of interior demising walls, including common elements such as structural walls and other interior structural components of the building and in fact vary from the dimensions that would be determined by using the description and definition of the "Unit" set forth in the Prospectus and the Declaration. The configuration and use of space or the floor plan design may vary from that in the Prospectus and Declaration because the Developer has reserved the right in the Prospectus to make design, dimension, specification, and plan changes at any time, in the Developer's discretion, without notice to Unit buyers. The measurements of rooms set forth on these floor plans are generally taken at the greatest points of each given room (as if the room were a perfect rectangle). All dimensions are approximate and may vary with actual construction, and all floor plans and development plans are subject to change. All furnishings and décor illustrated are not included with the purchase of the Unit. See Prospectus for additional information regarding what is offered with the Unit and the calculation of Unit square footage and dimensions.



ELEVEN

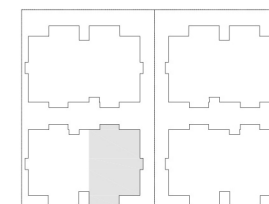
IN THE ROADS

UNIT B1

2 BED+DEN 2.5 BATH

A/C INTERIOR AREA	1,638 SF
TERRACE AREA	559 SF
TOTAL RESIDENCE	2,197 SF

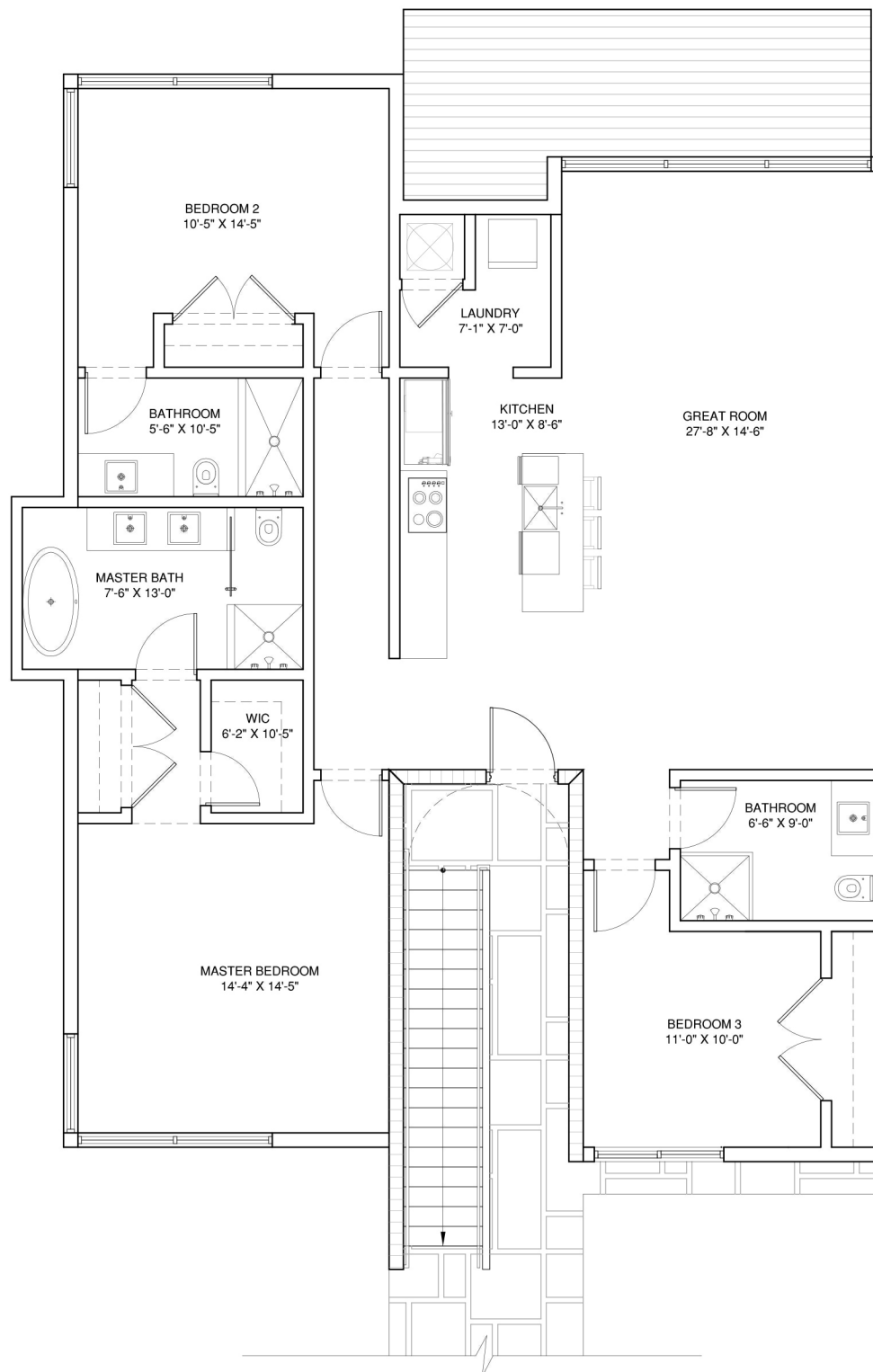
LEVEL 1



NOTE: AREAS ARE TAKEN FROM THE OUTER EDGE OF THE EXTERIOR WALLS TO THE CENTERLINE OF THE DEMISING WALLS AND STAIRCASES.



The dimensions of the Unit shown on this floor plan has been calculated from the exterior boundaries of the exterior walls to the centerline of interior demising walls, including common elements such as structural walls and other interior structural components of the building and in fact vary from the dimensions that would be determined by using the description and definition of the "Unit" set forth in the Prospectus and the Declaration. The configuration and use of space or the floor plan design may vary from that in the Prospectus and Declaration because the Developer has reserved the right in the Prospectus to make design, dimension, specification, and plan changes at any time, in the Developer's discretion, without notice to Unit buyers. The measurements of rooms set forth on these floor plans are generally taken at the greatest points of each given room (as if the room were a perfect rectangle). All dimensions are approximate and may vary with actual construction, and all floor plans and development plans are subject to change. All furnishings and décor illustrated are not included with the purchase of the Unit. See Prospectus for additional information regarding what is offered with the Unit and the calculation of Unit square footage and dimensions.



ELEVEN

IN THE ROADS

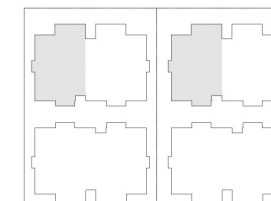
UNIT B3

3 BED/3 BATH

A/C INTERIOR AREA	1,675 SF
TERRACE AREA	* VARIES
TOTAL RESIDENCE	* VARIES

*REFER TO KEY SITE PLAN

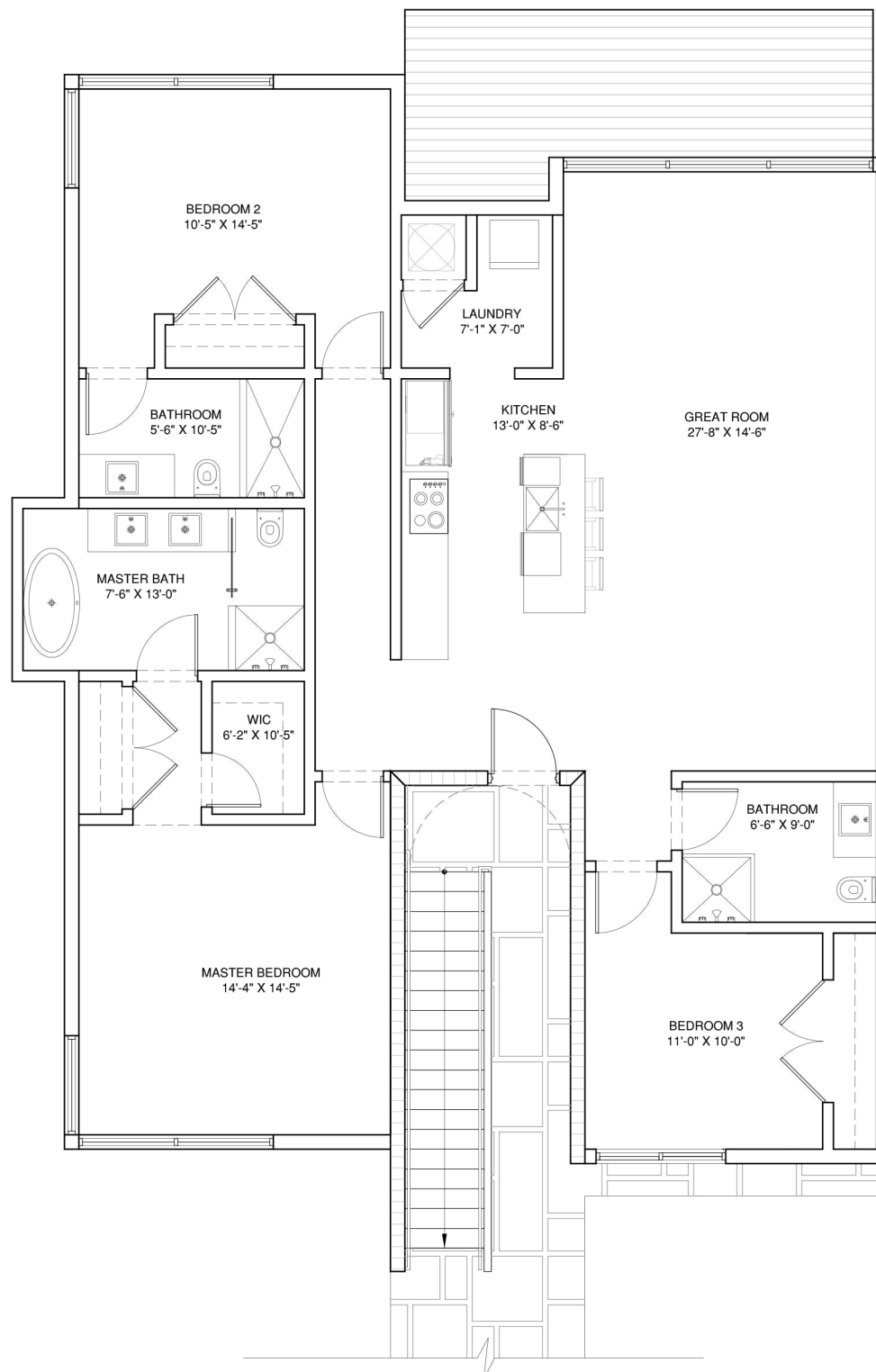
LEVEL 1



NOTE: AREAS ARE TAKEN FROM THE OUTER EDGE OF THE EXTERIOR WALLS TO THE CENTERLINE OF THE DEMISING WALLS AND STAIRCASES.



The dimensions of the Unit shown on this floor plan has been calculated from the exterior boundaries of the exterior walls to the centerline of interior demising walls, including common elements such as structural walls and other interior structural components of the building and in fact vary from the dimensions that would be determined by using the description and definition of the "Unit" set forth in the Prospectus and the Declaration. The configuration and use of space or the floor plan design may vary from that in the Prospectus and Declaration because the Developer has reserved the right in the Prospectus to make design, dimension, specification, and plan changes at any time, in the Developer's discretion, without notice to Unit buyers. The measurements of rooms set forth on these floor plans are generally taken at the greatest points of each given room (as if the room were a perfect rectangle). All dimensions are approximate and may vary with actual construction, and all floor plans and development plans are subject to change. All furnishings and décor illustrated are not included with the purchase of the Unit. See Prospectus for additional information regarding what is offered with the Unit and the calculation of Unit square footage and dimensions.



ELEVEN

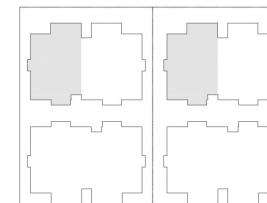
IN THE ROADS

UNIT B3

3 BED/3 BATH

A/C INTERIOR AREA	1,675 SF
TERRACE/YARD AREA	206 SF
TOTAL RESIDENCE	1,881 SF

LEVEL 2



NOTE: AREAS ARE TAKEN FROM THE OUTER EDGE OF THE EXTERIOR WALLS TO THE CENTERLINE OF THE DEMISING WALLS AND STAIRCASES.

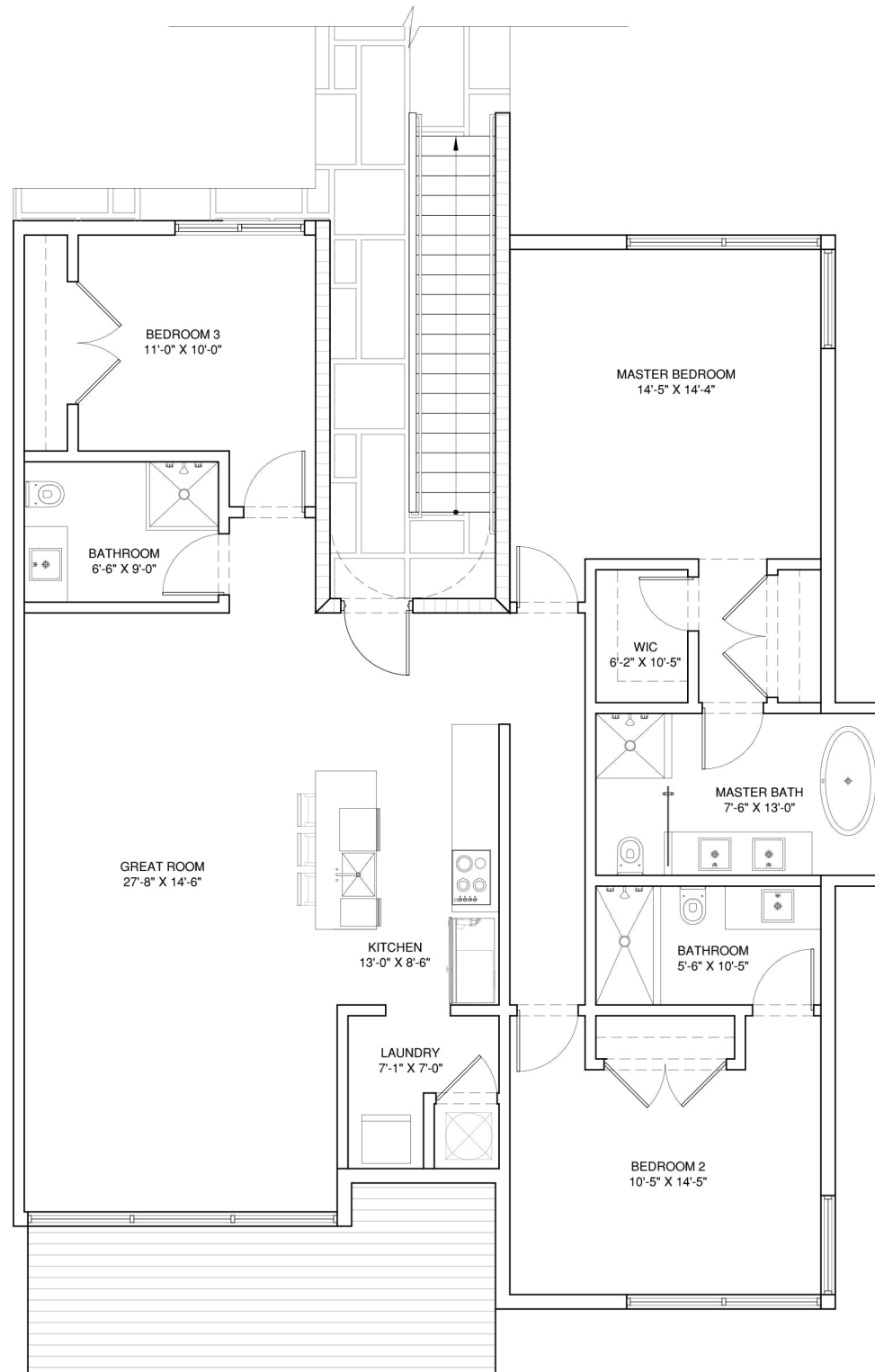


The dimensions of the Unit shown on this floor plan has been calculated from the exterior boundaries of the exterior walls to the centerline of interior demising walls, including common elements such as structural walls and other interior structural components of the building and in fact vary from the dimensions that would be determined by using the description and definition of the "Unit" set forth in the Prospectus and the Declaration. The configuration and use of space or the floor plan design may vary from that in the Prospectus and Declaration because the Developer has reserved the right in the Prospectus to make design, dimension, specification, and plan changes at any time, in the Developer's discretion, without notice to Unit buyers. The measurements of rooms set forth on these floor plans are generally taken at the greatest points of each given room (as if the room were a perfect rectangle). All dimensions are approximate and may vary with actual construction, and all floor plans and development plans are subject to change. All furnishings and décor illustrated are not included with the purchase of the Unit. See Prospectus for additional information regarding what is offered with the Unit and the calculation of Unit square footage and dimensions.



ELEVEN

IN THE ROADS

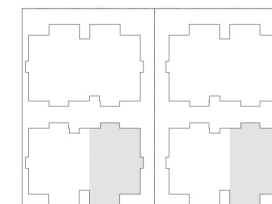


UNIT B4

3 BED/3 BATH

A/C INTERIOR AREA	1,675 SF
TERRACE/YARD AREA	206 SF
TOTAL RESIDENCE	1,881 SF

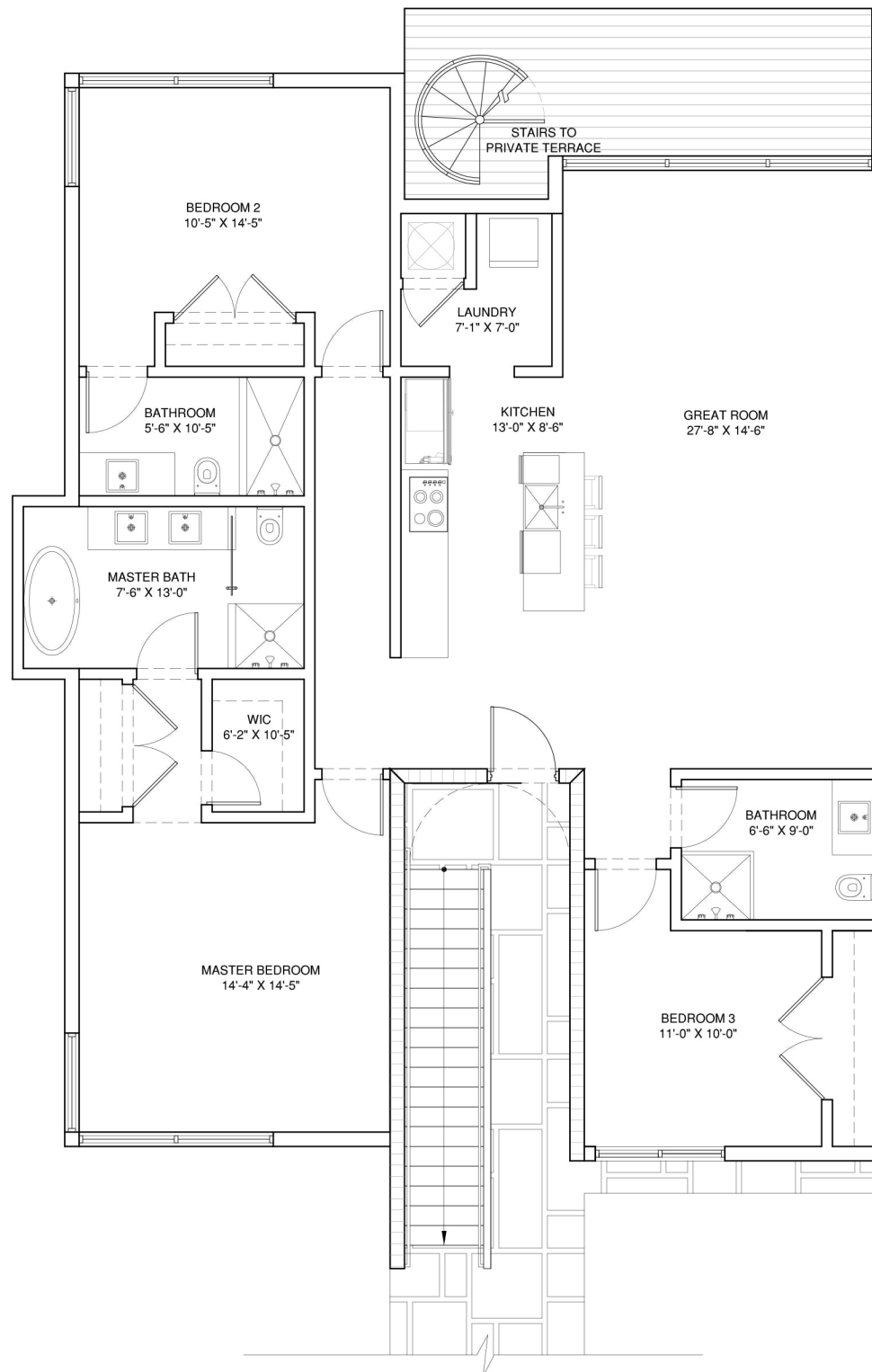
LEVEL 2



NOTE: AREAS ARE TAKEN FROM THE OUTER EDGE OF THE EXTERIOR WALLS TO THE CENTERLINE OF THE DEMISING WALLS AND STAIRCASES.



The dimensions of the Unit shown on this floor plan has been calculated from the exterior boundaries of the exterior walls to the centerline of interior demising walls, including common elements such as structural walls and other interior structural components of the building and in fact vary from the dimensions that would be determined by using the description and definition of the "Unit" set forth in the Prospectus and the Declaration. The configuration and use of space or the floor plan design may vary from that in the Prospectus and Declaration because the Developer has reserved the right in the Prospectus to make design, dimension, specification, and plan changes at any time, in the Developer's discretion, without notice to Unit buyers. The measurements of rooms set forth on these floor plans are generally taken at the greatest points of each given room (as if the room were a perfect rectangle). All dimensions are approximate and may vary with actual construction, and all floor plans and development plans are subject to change. All furnishings and décor illustrated are not included with the purchase of the Unit. See Prospectus for additional information regarding what is offered with the Unit and the calculation of Unit square footage and dimensions.



ELEVEN

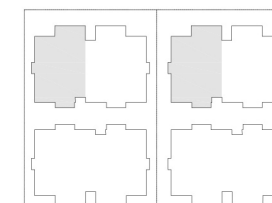
IN THE ROADS

B3 DELUXE

3 BED/3 BATH

A/C INTERIOR AREA	1,675 SF
TERRACE/YARD AREA	206 SF
PRIVATE ROOF TERR.	500 SF
TOTAL RESIDENCE	2,381 SF

LEVEL 3



NOTE: AREAS ARE TAKEN FROM THE OUTER EDGE OF THE EXTERIOR WALLS TO THE CENTERLINE OF THE DEMISING WALLS AND STAIRCASES.

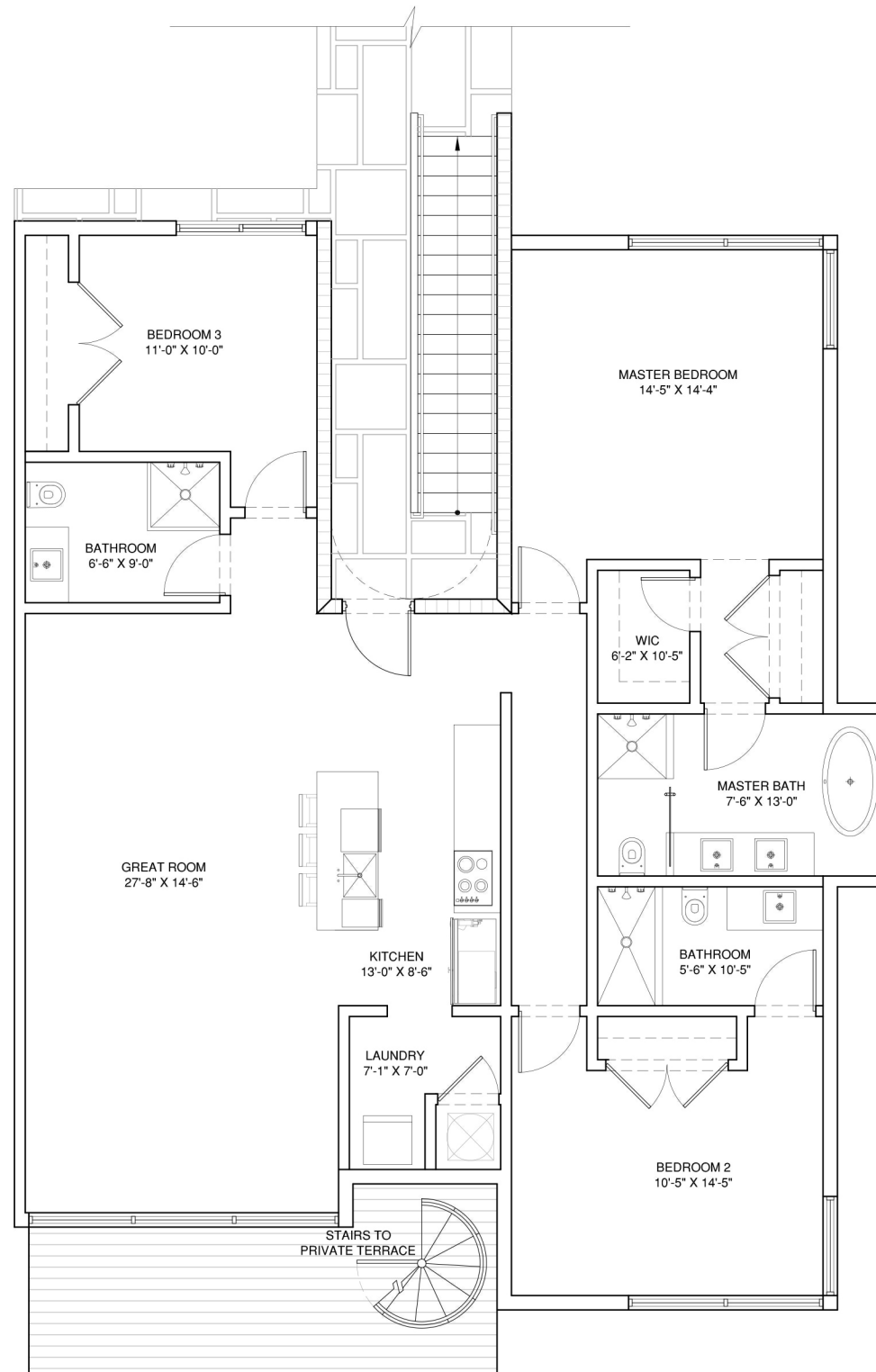


The dimensions of the Unit shown on this floor plan has been calculated from the exterior boundaries of the exterior walls to the centerline of interior demising walls, including common elements such as structural walls and other interior structural components of the building and in fact vary from the dimensions that would be determined by using the description and definition of the "Unit" set forth in the Prospectus and the Declaration. The configuration and use of space or the floor plan design may vary from that in the Prospectus and Declaration because the Developer has reserved the right in the Prospectus to make design, dimension, specification, and plan changes at any time, in the Developer's discretion, without notice to Unit buyers. The measurements of rooms set forth on these floor plans are generally taken at the greatest points of each given room (as if the room were a perfect rectangle). All dimensions are approximate and may vary with actual construction, and all floor plans and development plans are subject to change. All furnishings and décor illustrated are not included with the purchase of the Unit. See Prospectus for additional information regarding what is offered with the Unit and the calculation of Unit square footage and dimensions.



ELEVEN

IN THE ROADS

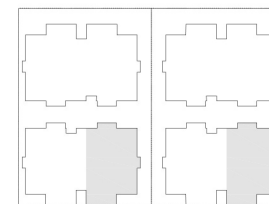


B4 DELUXE

3 BED/3 BATH

A/C INTERIOR AREA	1,675 SF
TERRACE/YARD AREA	206 SF
PRIVATE ROOF TERR.	500 SF
TOTAL RESIDENCE	2,381 SF

LEVEL 3



NOTE: AREAS ARE TAKEN FROM THE OUTER EDGE OF THE EXTERIOR WALLS TO THE CENTERLINE OF THE DEMISING WALLS AND STAIRCASES.



The dimensions of the Unit shown on this floor plan has been calculated from the exterior boundaries of the exterior walls to the centerline of interior demising walls, including common elements such as structural walls and other interior structural components of the building and in fact vary from the dimensions that would be determined by using the description and definition of the "Unit" set forth in the Prospectus and the Declaration. The configuration and use of space or the floor plan design may vary from that in the Prospectus and Declaration because the Developer has reserved the right in the Prospectus to make design, dimension, specification, and plan changes at any time, in the Developer's discretion, without notice to Unit buyers. The measurements of rooms set forth on these floor plans are generally taken at the greatest points of each given room (as if the room were a perfect rectangle). All dimensions are approximate and may vary with actual construction, and all floor plans and development plans are subject to change. All furnishings and décor illustrated are not included with the purchase of the Unit. See Prospectus for additional information regarding what is offered with the Unit and the calculation of Unit square footage and dimensions.